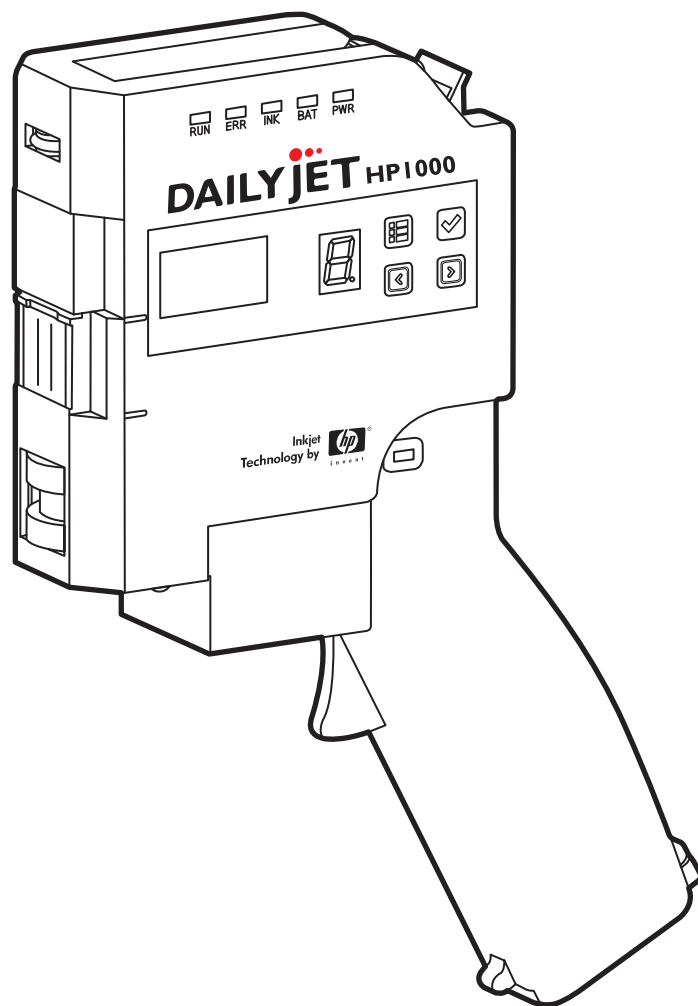


DAILYJET^{HP1000}

OPERATION MANUAL



Please refer to the operation manual if you have any questions about DAILY JET HP1000.
If your question cannot be resolved, please contact the Distributor.

Copyright

The contents of this manual, including text, images, and illustrations, are subject to copyright protection.

Any reproduction, dissemination, transmission, forwarding, publishing, or disclosure of the manual’s contents without written permission, is strictly prohibited.

Important Notices

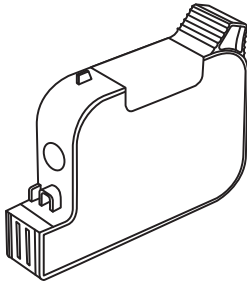
The warranty will be voided if any unauthorized alteration or modification of the hardware or software occurs. Furthermore, any damage and injury resulting from unauthorized alteration modifications of the hardware or software is not covered by the warranty. The Manufacturer does not have any legal responsibility for the results of any unauthorized alteration or modifications.

Use of any unauthorized ink cartridges, hardware, or software will void the warranty. Any damage or injury resulting from the use of unauthorized ink cartridges, hardware or software is not covered by the warranty. The Manufacturer does not have any legal responsibility for the results of use of unauthorized ink cartridges, hardware, or software.

This machine is a precision instrument. Please do not drop it, soak it in water or intentionally operate the machine in harsh environments. Doing so will result in the warranty being voided. The Manufacturer does not have any legal responsibility for the results of inappropriate use of the machine.

To ensure high quality printing and optimal machine function, please follow all instructions laid out in this manual.

Cartridge Information

	Inkjet technology: HP Thermal Inkjet Chip technology: HP I-Code encryption
	The model of the ink cartridges may vary based on geographic location.

We strongly recommend that you use genuine HP ink cartridges.

The manufacturer cannot guarantee printing quality or device function if genuine HP cartridges are used as specified by this manual.

Use of non-genuine HP ink cartridges will void the warranty and may result in device malfunction.

Use of non-genuine HP ink cartridges may result in the inability to read the I-Code, set the correct voltage, and display ink levels.

Copyright ©2015 MSSC, LLC. All rights reserved.

Contents

1	Safety precautions	3
2	Product Overview	5
3	Printer Setup	8
	Ink Cartridge Installation _____	8
	Micro SD Card _____	9
	Turning on the Printer _____	10
	Software Installation _____	12
4	Basic Operations	16
5	Create Print Messages	18
	Basic Operation _____	18
	Create a Text Message _____	20
	Create Serial Numbers _____	21
	Create a Time Stamp _____	22
	Create a Barcode Message _____	24
	Create a Matix Code _____	25
	Create an Image Message _____	26
6	Connecting the Printer to a PC	27
7	Transferring Print Messages to the Printer	28
8	Printer Settings	29
	Description of All Settings _____	29
	Configuring Continuous Printing _____	31
	Configure Operating Direction _____	32
	Change the Value of the Serial Number Setting _____	33
	Configure Active Nozzles _____	34
	Configure Print Density _____	35
	Configure the Spacing Between Messages _____	36
	Configure Software Language _____	37
	Check Hardware Settings, Configuring Date and Time _____	37
	Reset the Printer to Factory Default Settings _____	38
9	Basic Cleaning Guide	39
	Cleaning the Printhead _____	39
	Printhead Printing Test _____	40
10	Troubleshooting	41
	Ink Level _____	41
	Low Battery _____	41
	Error Messages _____	42
	Resolving Poor Print Quality _____	43
	Troubleshooting _____	44
	Firmware Updates _____	45
11	Technical Information	46

1 Safety precautions

Please follow safety precautions to operate the hand printer safely and correctly.

Please follow the safety precautions to avoid any injury and any damage to the printer and the cartridge.

Please follow the safety precautions to avoid damage resulting from improper usage that would void the warranty.



Warning

Warning: Failure to follow the instructions when operating the printer may cause bodily injuries or severe damage to the printer.



Caution

Caution: Failure to follow the instructions while operating the printer may cause bodily injuries or severe damage to the printer.



This symbol denotes procedures that are absolutely prohibited.



This symbol denotes that the procedures that must be followed.



Warning



Do not use any third-party power adapters.

Use of other power adapters may cause fire or electric shock.



Only use the power adapter included in the original package.

Ensure the power adapter complies with local safety standards.



Do not cause any damage to the power adapter.

Please store the power adapter appropriately. A damaged power adapter may cause fire or electric shock.



Do not use the printer in the following conditions or environments. Please store the printer and ink cartridges appropriately.

- Direct sunlight or strong light.
- Abnormally high temperature.
- Near open flames.
- In excessively dusty environments.
- In very damp or moist environments.
- Near corrosive or flammable material.
- Near paints, oils, or other chemicals.
- In environments with high static electricity.



Ink cleaning procedure

If your skin directly contacts the ink, please wash thoroughly with soap and water. If the ink contacts your eyes, immediately flush them with clean water. If the ink contacts your mouth, immediately rinse and wash with clean water. If you do not feel well, please seek immediate medical attention.



Do not attempt to disassemble or repair the printer.

Please do not attempt to disassemble, repair, or modify the printer. If have any questions, please contact the Distributor.



Should the printer malfunction or enter an otherwise abnormal state, immediately stop using it.

Please keep foreign materials away from the printer or ink cartridge. If there is smoke or odors coming out of the printer, immediately cease operation, turn off the printer, unplug the power adapter, and contact the Manufacturer.



Caution



Do not mix different brands of batteries.

Mixing may result in abnormal heat, battery rupture, or leaking battery fluid.



Please remove the batteries and store them safely, if the printer will not use for a long period.

Leaking battery fluid may cause damage to the printer.



Do not use non-genuine ink cartridges.

Such use may cause poor printing, ink leakage, or damage to the printer.



Do not intentionally shake the printer.

Shaking may cause ink to leak from the cartridge and other damage to the printer.



Do not touch the inkjet head with your hand or strike the printerhead with any hard object.

This may cause poor printing, ink leakage, or damage to the printer.



Do not use any corrosive solvent to clean the printerhead.

This may cause inkjet deformation or splitting, as well as ink deterioration or discoloration.



Please use the printerhead cap appropriately.

Please use the printhead cap after printer usage, or cartridge replacement. The cap protects the printerhead from foreign materials that could degrade print quality.



Please store the printer appropriately if it will not be used for a long period.

For long-term storage, please place the printer into the toolbox to avoid dust, moisture, or other contaminants.



Please store the ink cartridge safely.

Please store the ink cartridges in a location out of reach of children.



Please do not intentionally shake ink cartridges.

Intentional shaking may cause ink to leak from the cartridge.

Auxiliary Roller

The auxiliary roller assists the main roller ensuring the printer runs smoothly to achieve quality prints.

Printhead Cap

Please use the printhead cap after printer usage or cartridge replacement. This protects the printhead ensuring quality prints.

Ink Cartridge Slot

The ink cartridge will be inserted here.

Main Roller

When printing, the main roller must be able to roll on the print surface.

Active Button

In order to print, hold the active button while rolling the printer flush with the print surface.

Cartridge Latch

This latch secures the ink cartridge to the printer, preventing accidental cartridge release.

Mini USB Port

The mini USB port is used to transfer print messages and printer settings from your computer.

Micro SD Slot

Insert the micro SD card used for storing print messages in this slot. This printer only supports cards formatted in FAT32.

Power Switch

Toggles power states. The printer must be turned on in order to configure settings and print messages.

AC Power Port

Plug in the power supply to charge batteries.

Battery Compartment

Used to store four AA rechargeable batteries. Open the cap to place the four batteries in the compartment.

Status Indicators

These indicators display the current status of the printer.

Operating Display Panels

Used to configure printing and settings.

Battery Charging Indicator

The charging indicator will light up when the power supply is connected. When the battery is fully charged or the power supply is connected, the indicator will turn off.

Handy Printer Operating Display Panel

The actual display panel may differ slightly from the one depicted in this manual.

Status Indicators

RUN: Active Printing (Green)

This indicator will blink whenever the active button is depressed and will remain blinking until the active button is released.

ERR : Error Status (Red)

This indicator will light up whenever the printer encounters an error. A numeric error code will be displayed on the mode indicator panel as well as a brief description on the LCD preview.

INK: Low Ink Warning (Yellow)

When the ink level reaches pre-determined value the indicator will light up. The low ink threshold can be configured in the settings.

BAT: Battery Low (Red)

When the battery is lower than the pre-set value, this LED will light up. Low battery may result in low quality prints, or inability to print.

PWR: Power On (Green)

When the printer is turned on, this LED will light up and will stay lit until the printer is turned off.

Function Key

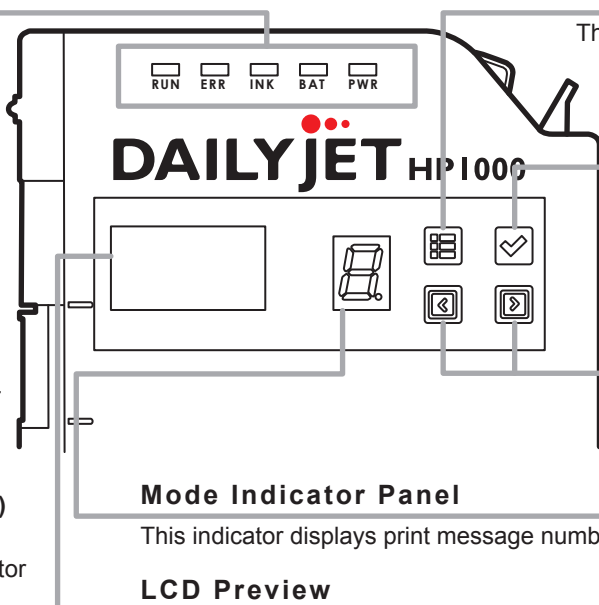
This key is used to switch between printing mode and settings configuration mode.

Confirmation Key

Use this key to confirm the actions in print or settings configuration mode.

Selection Keys

Use the selection keys to change print messages or change settings.



Mode Indicator Panel

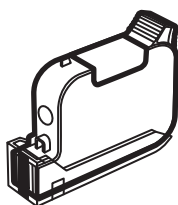
This indicator displays print message numbers, settings, or error codes.

LCD Preview

The LCD preview displays the print message contents, settings, and error messages.

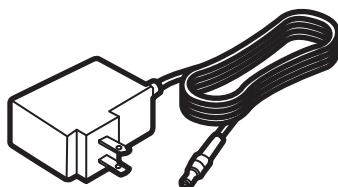
Parts and Accessories

The actual parts and accessories may differ slightly from the ones depicted in this manual.



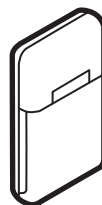
Genuine HP Ink Cartridge

The Ink cartridge must be purchased separately and does not come with the printer.



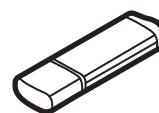
AC Power Adapter

The adapter is used to charge the printer's rechargeable batteries without removing them from the battery compartment.



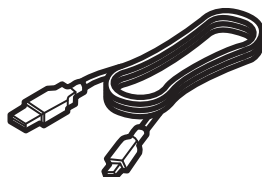
High Speed Battery Charger

This is used to charge the printer's batteries.



USB Flash Drive

The printer software and operation manual are stored on the USB flash drive.



USB Cable

Use the USB cable to connect the printer to your computer.



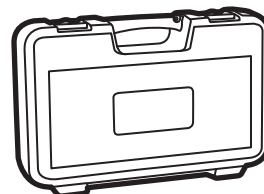
Micro SD Card

The micro SD card is used to store the print messages. The card comes already installed on the printer.



Rechargeable Batteries (4)

Place the rechargeable batteries in the battery compartment prior to operating the printer. **NOT INCLUDED.**



Toolbox

Parts and Accessories are packed in the toolbox.

Software Configuration

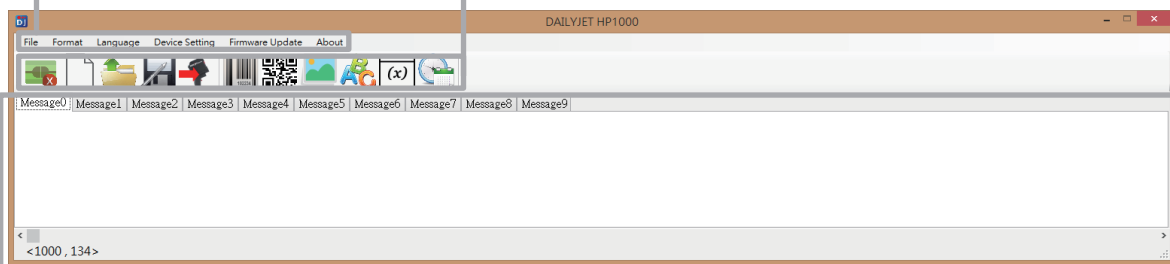
The actual interface may differ slightly from the one depicted in this manual.

Menu Bar

Contains settings and operations.

Function Buttons

Use the function buttons to connect your printer, as well as create and upload print messages.



Editing Window

This window is used to create and interact with print messages. There are a total of 10 message slots (0-9) that allow for up to 10 messages to be stored.

Function Buttons



Connect
Connect to the printer.



Barcode
Create a new message containing a barcode.



Disconnect
Disconnect the printer.



QR Code
Create a new message containing a QR code.



New
Create a new message or a new group of messages.



Image
Create a new message containing an image selected by the user.



Open
Open a message or a group of messages.



Text
Create a new message containing text.



Save
Save a message or a group of messages.



Serial Number
Contains a new message containing a serial number.



Export
Export a message or group of messages to the printer.



Time Stamp
Create a new message containing a time stamp.

3 Printer Setup

Ink Cartridge Installation

The actual ink cartridge may differ slightly from the one depicted in this manual.

Warning

Please turn off the power when installing or removing ink cartridges.

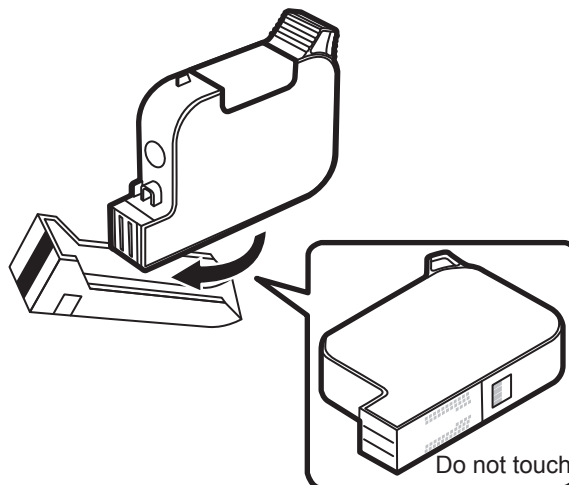
1

Take out the ink cartridge from the package and remove the printhead cap.

Warning

Do not touch the inkjet head or soft plate electrodes at the bottom of the cartridge to avoid any damage or oxidation.

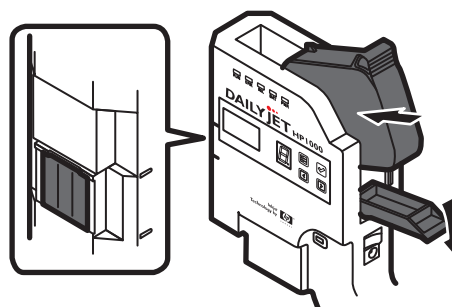
Please do not discard the printhead cap. When the printer is not in use, please remove the ink cartridge and put the printhead cap back on.



2

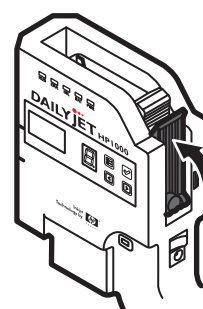
Open the cartridge latch and slowly insert the ink cartridge from the back of the printer. When the cartridge is properly installed, the printhead is exposed at the front of the printer. Please make sure that the ink cartridge is properly installed in the handy printer.

During installation of the ink cartridge, please do not bump into the wafer detector or ink cartridge detector. This may cause damage to the detectors or poor printing.



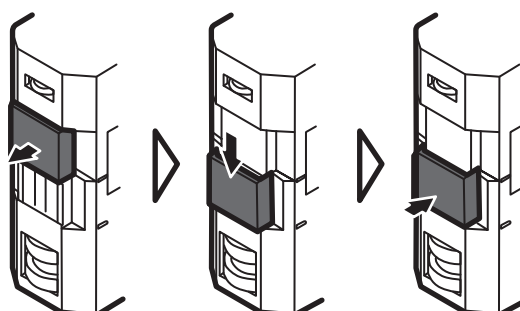
3

After checking that the cartridge is properly installed in the printer, close the cartridge latch. At this point, the ink cartridge is securely installed in the printer.



Warning

Please use the printhead cap after printer usage. The cap protects the inkjet head from foreign materials as well as drying.



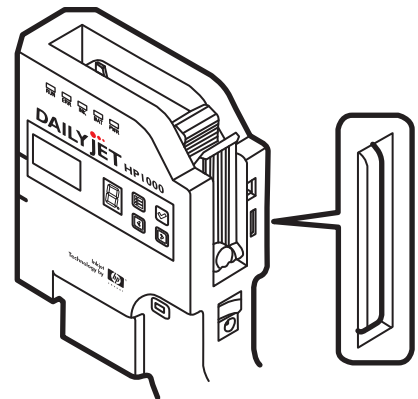
Micro SD Card

The actual micro SD card may differ slightly from the one depicted in this manual.

The micro SD card should be already installed in the printer.
Please check to see whether the Micro SD card is installed in the printer.

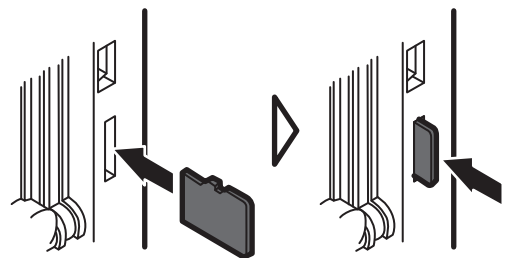
Warning

The micro SD card stores the print messages. The printer cannot be operated without the micro SD card.
Please keep the micro SD card securely locked in the printer at all times. Please do not remove the micro SD card unless absolutely necessary.



Micro SD Card Insertion and Removal

Push the micro SD card in the slot until it clicks in.
Push the micro SD card slot again to release it.



Warning

Please insert the micro SD card in the correct direction. Otherwise, the printer cannot be operated.
Please carefully remove the micro SD card. The card may fall out of the slot during removal.
If you do not use the micro SD card that comes with the printer, please format the micro SD card to FAT32.

Turning on the Printer

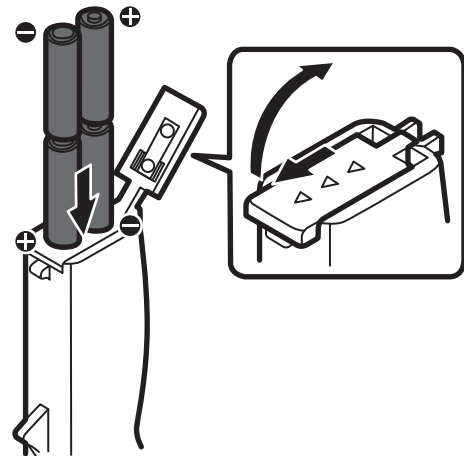
Rechargeable Batteries

The actual rechargeable batteries may be differ slightly from the ones depicted in this manual.

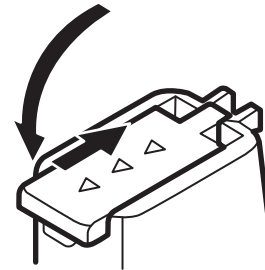
- 1** Open the cap of battery compartment and place the four batteries inside.

⚠ Warning

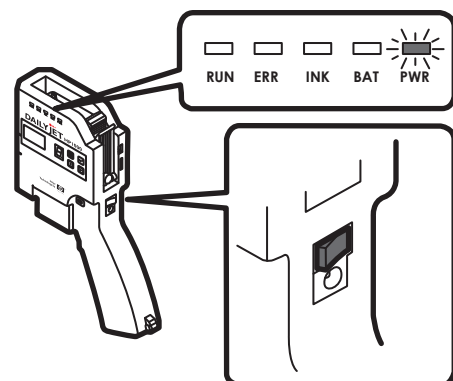
Please ensure the batteries are placed correctly. Incorrect placement will prevent the printer from turning on.



- 2** After correctly placing the batteries, securely close the battery compartment's cap.



- 3** Turn on the power switch. When turn on the power, you will hear a power on sound and the PWR LED light will light up.



⚠ Warning

The printer cannot be operated without the four rechargeable batteries correctly secured in the battery compartment.

AC Power

The actual AC Power adapter may differ slightly from the one depicted in this manual.

AC Power Adapter

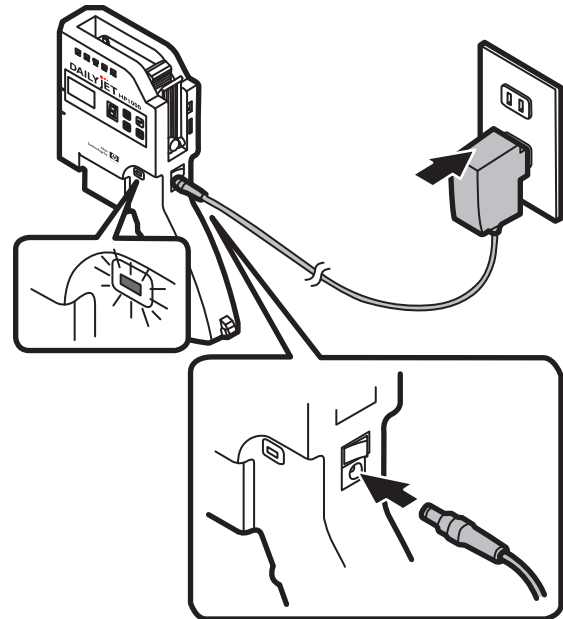
The AC adapter does not need to be plugged in during printer operation, but it can be plugged in to charge the batteries.

The four rechargeable batteries must be placed in the battery compartment in order to connect to the power adapter.

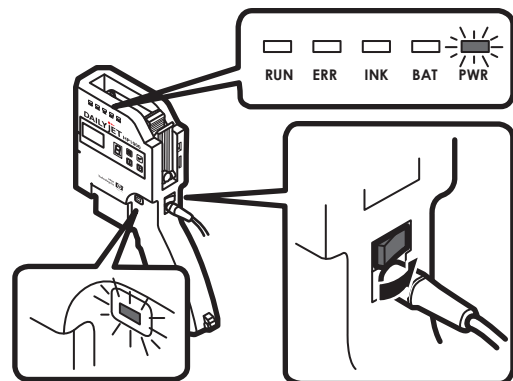
- 1 Make sure the AC power adapter is plugged in to the printer and the AC power socket. When the power is connected, the battery charging light will turn on indicating charging status.

Warning

You must place the four rechargeable in the battery compartment in order to operate the printer using the AC power.



- 2 Turn on the power switch. You will hear the power on sound and the PWR LED will light up. The printer can print and charge the batteries at the same time if the AC adapter is plugged in.



Warning

The four rechargeable batteries must be placed in the battery compartment in order to operate the printer. In order to charge the batteries using the AC power adapter, the batteries must be placed in the battery compartment.

The four rechargeable batteries must be placed in the battery compartment in order to print using AC power.

Software Installation

The actual software may differ slightly from the version depicted in this manual.

In order to create new print messages, the software must be installed on your computer.

All required installation files are on the USB flash drive that is included with the printer.

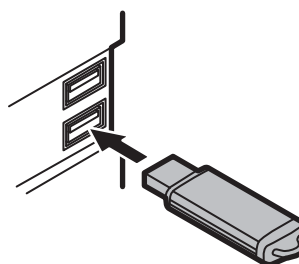
Supported Operating Systems

- Windows 8 (32bit/64bit)
- Windows 7 (32bit/64bit)
- Windows Vista (32bit/64bit)

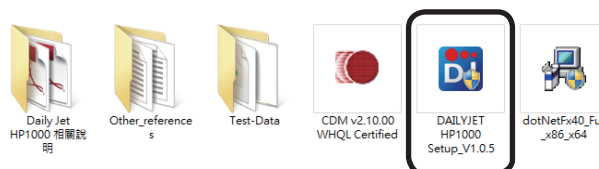
Warning

- “.NET Framework 4.0” is required to install this software.
- The software installer will automatically check for “.NET Framework 4.0” on your computer. If it is not installed, the installer will notify you. The installer for “.NET Framework 4.0” can be found on the USB drive provided with the printer. You may also download “.NET Framework 4.0” from the internet.

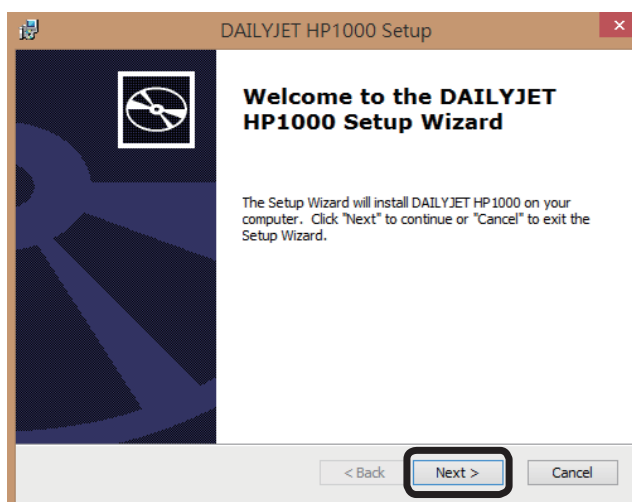
- 1** Please plug the flash drive into your computer.



- 2** Double-click the "DAILYJET HP1000Setup_V1.0.5" installation file on the USB flash drive to begin the installation.



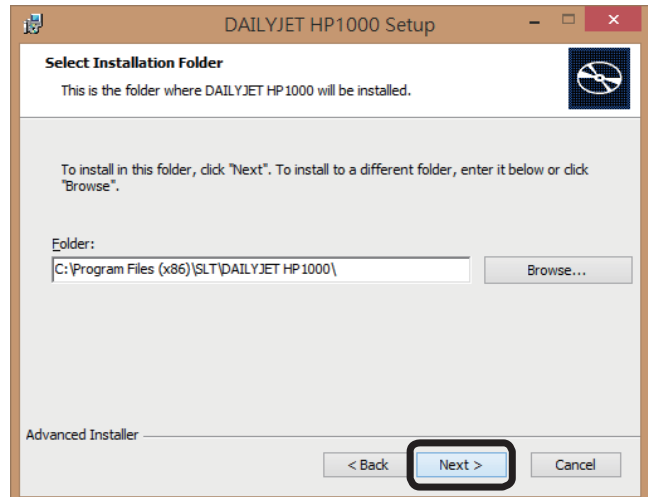
- 3** Click the "Next" button on to begin the installation process.



4

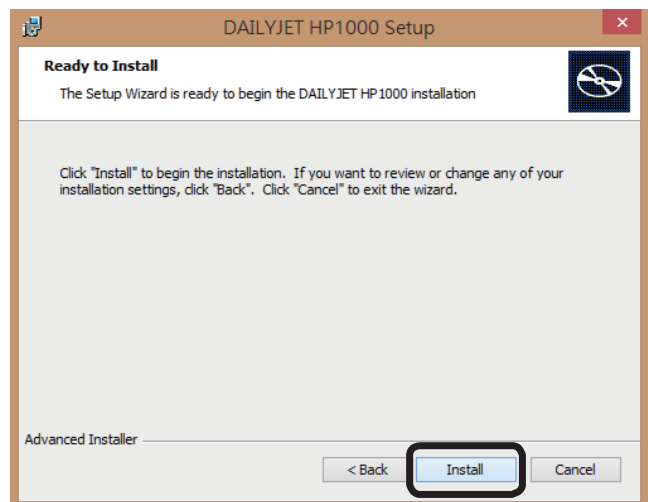
You may change the directory where the software is installed, or leave it in the default location. Click the “next” button to proceed.

To change the installation directory, click the “Browse...” button on the installation screen.



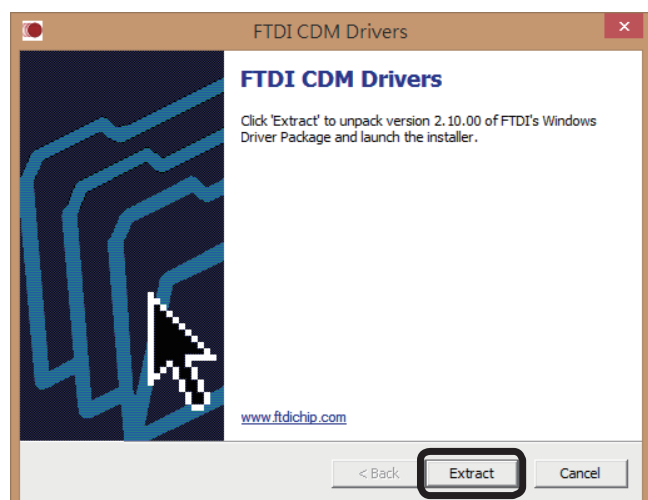
5

Click "Install" begin installation.

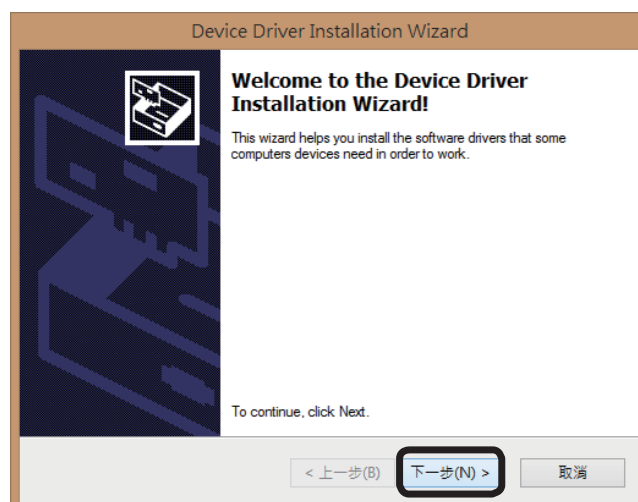


6

To complete installation, the FTDI CDM driver package must be installed. Click “Extract” to begin installing the drivers.



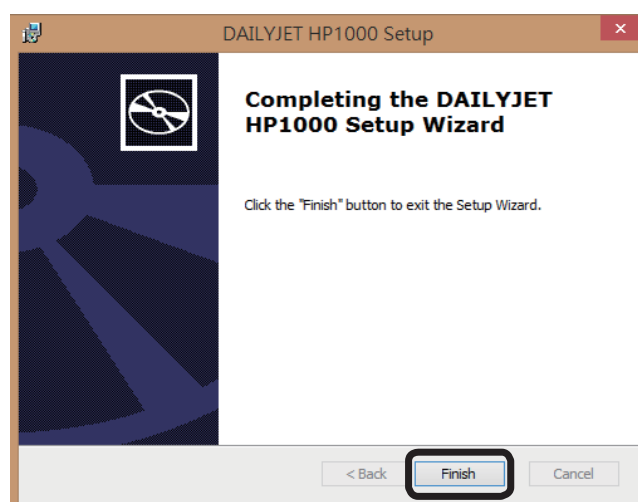
- 7** Click "Next" to continue installing the drivers.



- 8** The FTDI CDM driver package installation is now complete. Click the "Finish" button in the installation window to continue.

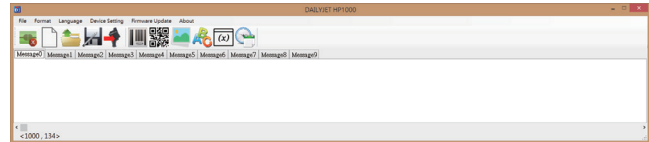


- 9** All required files have now been installed. Click "Finish" to exit the installer.



10

After the software is installed, there will be a shortcut for the software on the desktop. Double click the shortcut to open the software.



Warning

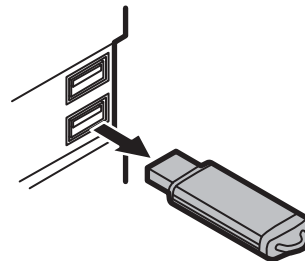
If you cannot open the software, please reboot your computer.
If the software still cannot be opened, please uninstall and then reinstall the software.
If you still cannot open the software please contact the distributor.

11

Please unplug the flash drive and store it properly after completing the software installation.

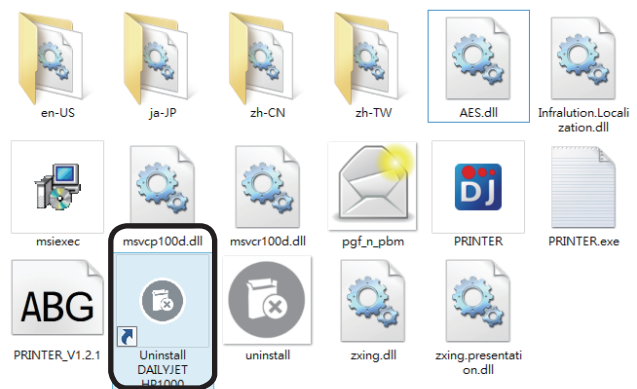
Warning

Please safely remove the USB flash drive from the computer to avoid data corruption.



Uninstalling the Software

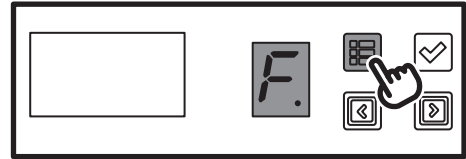
To uninstall the software, click "Uninstall DAILYJET HP1000" in the installation directory.
In addition, the software can also be uninstalled from the Control Panel (Control Panel→Programs→Uninstall a Program).



4 Basic Operations

The printer comes with sample print messages pre-loaded.
This manual will use the sample messages to illustrate basic operations.

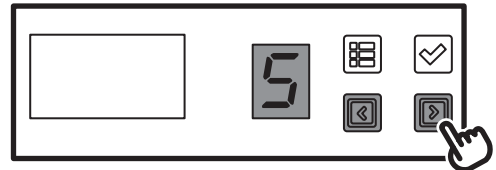
- 1** Click the function key to switch between settings configuration mode and print mode.
When in printing mode, the mode indicator panel will display numbers. These numbers indicate which message is selected.
When in settings configuration mode, the mode indicator panel will display letters. These letters indicate which setting is being configured.



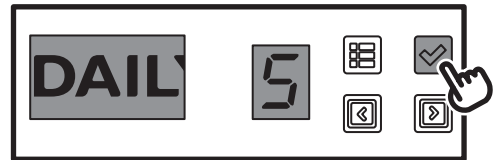
- 2** Press the selection keys to select different print messages or settings.

⚠ Note

The printer comes with 10 preloaded print messages (numbered 0-9) for testing purposes.



- 3** Press the confirmation key to confirm print mode. The current print message will be displayed on the LCD preview.
When in function setting mode, the LCD preview will display the description of the selected settings. You then press the confirmation key to confirm the setting you are changing.

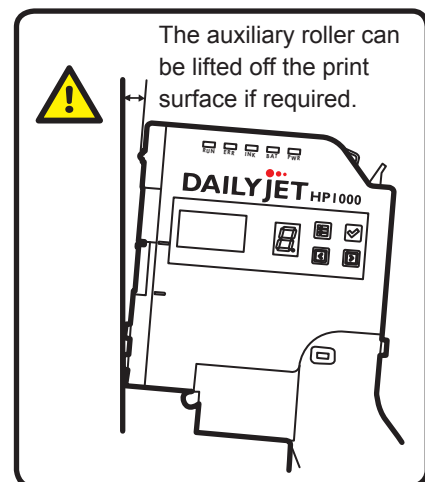
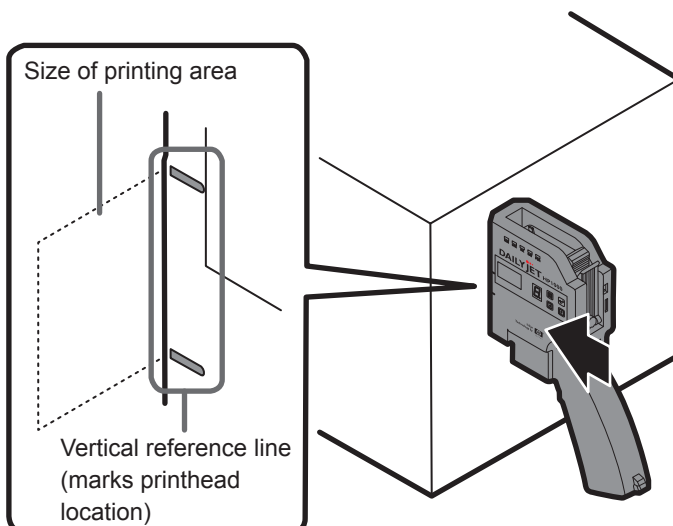


- 4** Place the printer flush against the printing surface, ensuring that the main and auxiliary printer are properly positioned.
Use the vertical reference line to correctly position the printer on the print surface.

⚠ Warning

To maintain quality printing, make sure that the main and auxiliary roller are directly in contact with the print surface.

On uneven surfaces, the auxiliary roller can be lifted slightly off the print surface to ensure quality printing. However, if the gap between the auxiliary roller and print surface is too big, it may result in poor printing. Please test multiple times when lifting the auxiliary roller off the print surface.

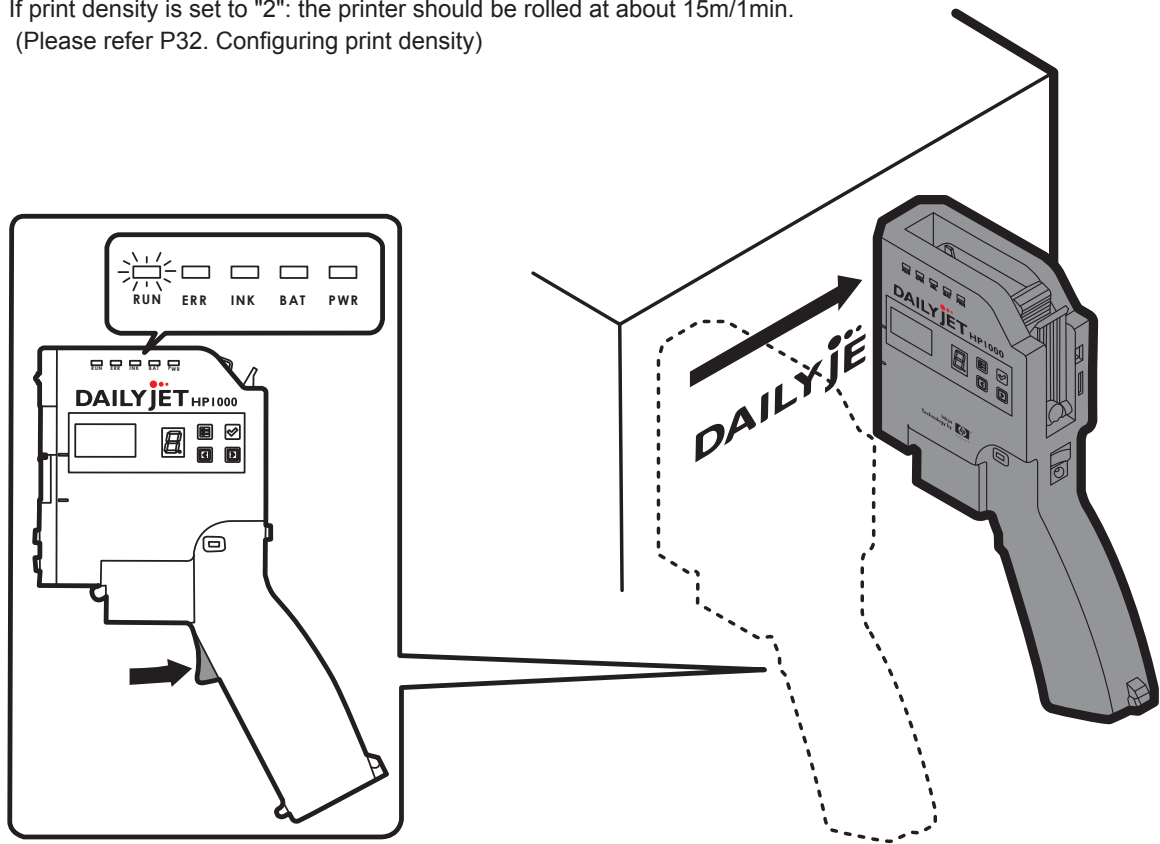


5

Once the printer is correctly aligned and flush with the print surface, hold down the active button. When the active button is held down, the RUN LED will light up. The mode indicator panel and LCD preview will turn off. Then the printer will beep indicating that it is ready to print. While holding the active button, move the printer until the message is printed completely. After the message has been printed, the printer will beep again. At this point, release the active button. The RUN LED will turn off, the mode indicator panel and LCD preview will turn on.

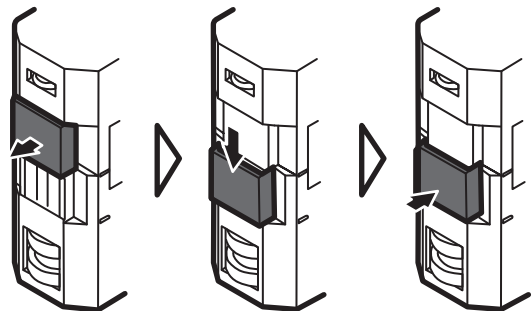
Warning

- If the active button is released prematurely during printing, the printer will detect an error. It will beep three times indicating that the printing was interrupted.
- Please roll the printer at a reasonable and consistent speed. There may be a degradation of quality if the printer is moving too quickly, slowly, or if there is a large change in rolling speed.
- The specific speed that the printer must be rolled at depends on print density.
If print density is set to "1": the printer should be rolled at about 30m/1min.
If print density is set to "2": the printer should be rolled at about 15m/1min.
(Please refer P32. Configuring print density)



Warning

Please use the printhead cap after printer usage. The cap protects the inkjet head from foreign materials as well as drying.



Print messages must be created using the software included with the printer.
This section describes how to create new print messages.

Basic Operation

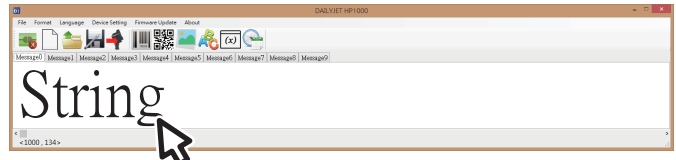
- 1 Select the slot you would like to create your message in (0-9).



- 2 Select the message type.



- 3 The message type you selected will now be highlighted. Now you can begin creating the message in the editing window. You can access the advanced editing menu by double clicking the recently created message. This menu allows font, text size, and formatting to be changed.




You can also move the message within the editing window by left clicking and dragging it about. Changing message position within the window will affect the print layout.

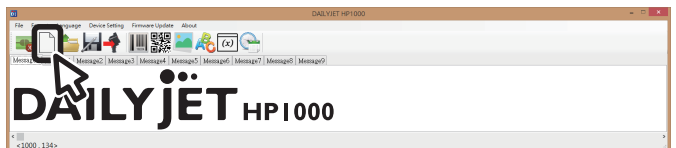
Warning

To change the vertical position of the message, right click and drag up or down. To delete the message right click, and the delete menu will pop up.

Create One or More Print Messages

- 1 Left click on  to set up new print messages.

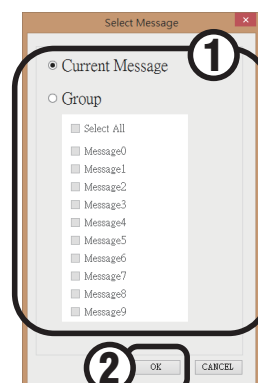
To create a single message, select the first radio dial, then select which message slot you would like to create the message in.




- 2 To create a group of messages, select the second radio dial. Then, select which message slots to create messages in. Finally, click the OK button to begin editing.

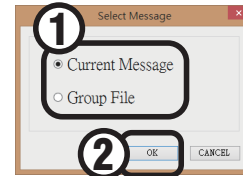
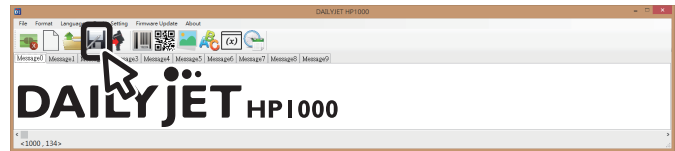
Warning

If you create new messages in slots with existing messages, the previous messages will be overwritten.



Saving Print Message

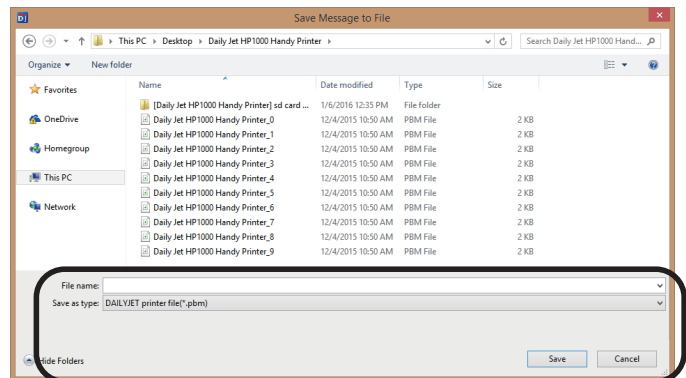
- 1 Left click on  to save the current message that is being worked on.
- 2 A dialogue box will pop up, select the first radio dial to save the message as a single message. Click the OK button to continue. To save a group of messages, select the second radio dial.




- 3 Select the location you wish to store the file, enter the file name, and click "save" to save the message file.

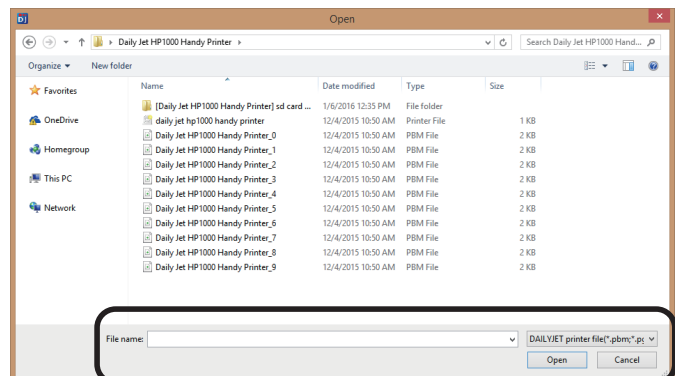
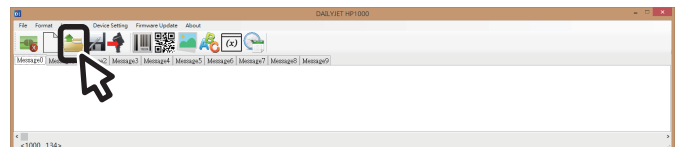
Warning

PBM files are used to store single messages.
PGF files are used to relate multiple PBM files in a group.

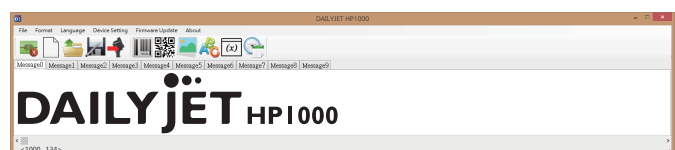


Opening Existing Messages



- 1 Left click on  to open your print messages.
- 2 From the file selection menu, navigate to where the messages are stored and chose a message (PBM) or a message group (PGF) to open.

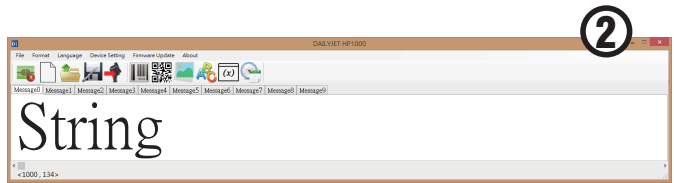
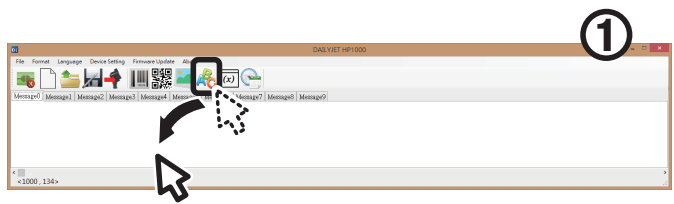


- 3 The PBM file stores individual message files.
The PGF file stores message group files.



Create a Text Message

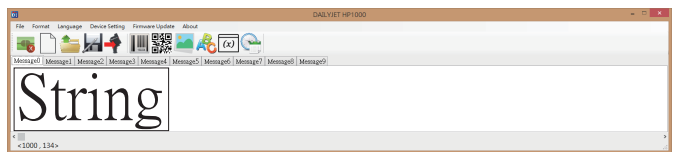
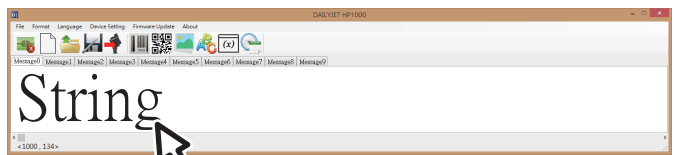
- 1** Left click on  to create a new text message.
The icon will now be highlighted blue .



- 2** The editing window will now contain the default message text.

Note

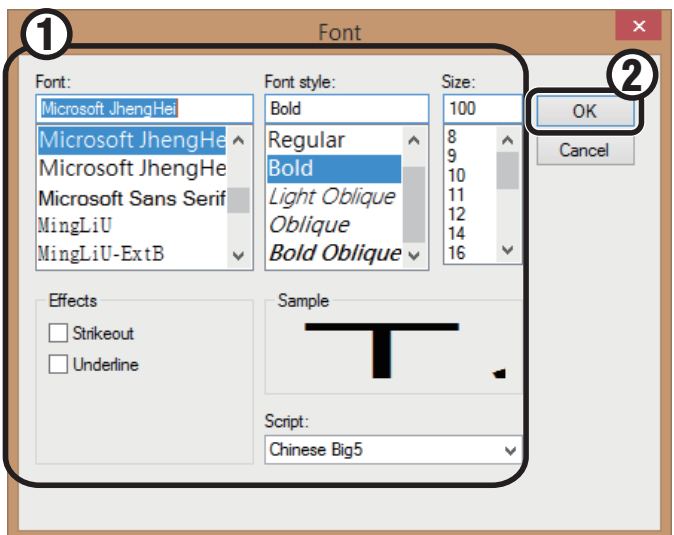
To enter typing mode, click on the message. A black frame should appear, indicating that typing mode is now active. To exit typing mode, click the message again. The message cannot be edited outside of typing mode.



- 3** Double click the message to enter advanced editing mode. Here you can change the font, font size, and formatting.

Note



These settings can also be changed in the menu bar.



Create Serial Numbers

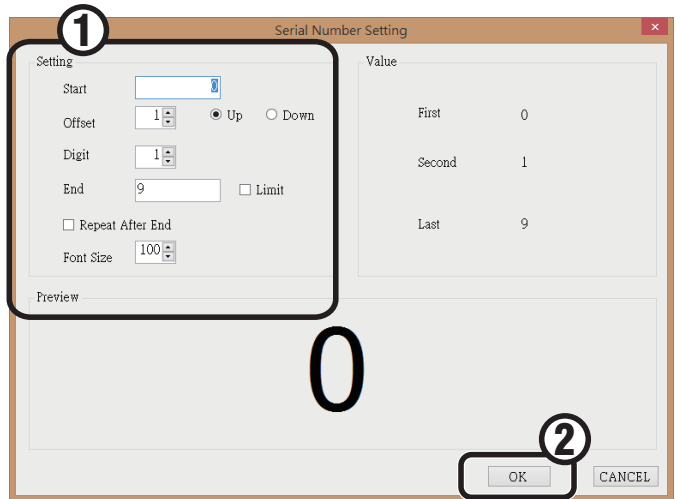
Select the base serial number, all subsequent serial numbers will increase or decrease by one.

You can combine a serial number with other message types in a single message.

- 1** Left click on  create a serial number.
The icon will now be highlighted blue .
Move to the editing window and click the background to begin editing the serial number.

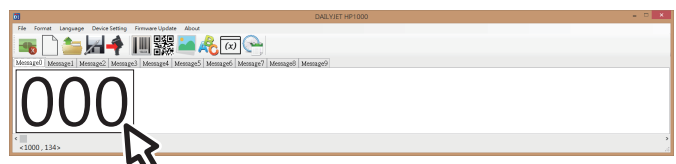


- 2** Set the base value, step value, number of digits, end value, cycling, and font size. Click OK to complete the setup.



Parameters	Description
Base value	The initial value of the serial number. This can range from 0 to 99,999,999.
Step value	The number changes by every print. Select add or subtract, and make sure that the step value is between 1 and 100.
Number of digits	The number of digits of the serial number, ranging from 1 to 8. If the number of digits specified is greater than the base serial number, leading zeroes will be added. For example, if the base number was 33 and the number of digits selected was 4, then two extra zeroes would be appended, making the base 0033.
End value	When the serial number reaches this value, it will either restart from the base or stop incrementing/decrementing. The behavior is dependent on if cycling is turned on or off. If there is no end value set, the end value will default to 99,999,999.
Cycling	Determines if the serial number will continue incrementing/decrementing from the base after reaching the end value.
Font size	Font size of serial number.



- 3** The serial number's base value will now be displayed in the editing window. To modify the serial number, double click the serial number to return to the serial number configuration window.

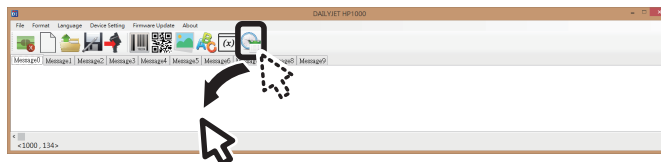


Create a Time Stamp

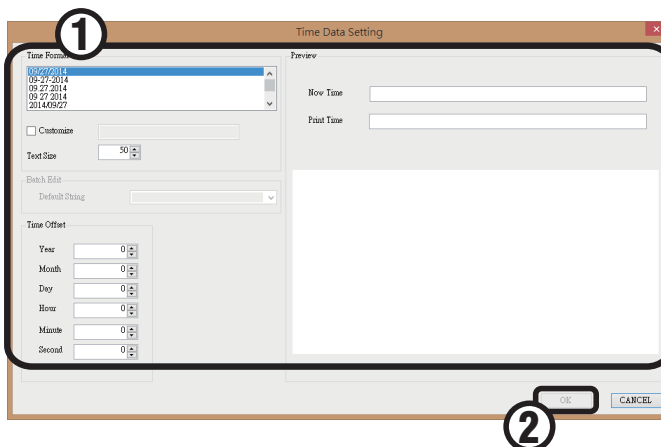
You can create a time stamp to keep track of date or time.

The printer will automatically update the time stamp's date and time.

- 1 Left click on  to create a time stamp. The icon will now be highlighted blue . The click on the editing window to enter the time stamp configuration menu.



- 2 Set up the format of time stamp, batch modification, and time displacement. The time stamp can be previewed on the right of the configuration menu.




Parameters	Description
Time stamp format	Commonly used formats are listed in the settings. Select your format from the list of formats. To create your own format, select the customize option. After selecting the customize option, enter your desired format. To learn more about creating a custom time format, see the next page.
Time displacement	The printer can be configured to add a fixed amount of time to the time stamp from the date of printing. For example, if displacement was set to 15 days and the print date was 2/11/2016, the time stamp would display 2/26/2016. Set up the modification from the current time stamp to create a new time stamp for a print job.
Preview	The preview will display the current time and the print time. The current time will be displayed on top, and the print time on the bottom. The print time will include any time delay you have added, and will be output in the format of your choice.

- 3 The timestamp will be shown in the editing window after the time stamp setup is completed. To return to the time stamp setup, just double click the time stamp.



Custom Time Format



Note

If the format is entered correctly, the printer will display a .

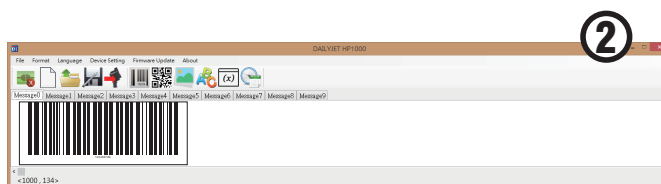
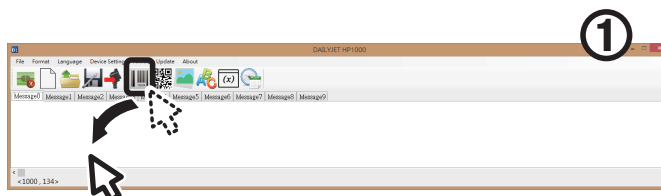
If the format is entered incorrectly, the printer will display a .

Output	Code	Description
Year	yy	Two-digit year (20YY).
	yyyy	4-digit year (YYYY).
Month	M	Month without a leading zero if less than 10.
	MM	Two-digit Month with a leading zero if less than 10.
Day	d	Day without a leading zero if less than 10.
	dd	Two-digit Day with a leading zero if less than 10.
Hour	H	24-hour format without a leading zero if less than 10.
	HH	24-hour format with a leading zero if less than 10.
	h	12-hour format without a leading zero if less than 10.
	hh	12-hour format with a leading zero if less than 10.
Minute	m	Minute without a leading zero if less than 10.
	mm	Two-digit Minute with a leading zero if less than 10.
Second	s	Second without a leading zero if less than 10.
	ss	Two-digit Second with a leading zero if less than 10.
Other	tt	Display AM or PM based on the time.
	W	Display the week number without a leading zero if less than 10.
	WW	Display a two-digit number indicating week number with a leading zero if less than 10.
	x	Display day number completely without leading zeroes.
	xxx	Display the day number with all leading zeros.
Symbol	/	These symbols are delimiters that can be used in time stamps. They must be enclosed by single quotes, e.g. ' '.
	:	
	—	
	.	
	Space	

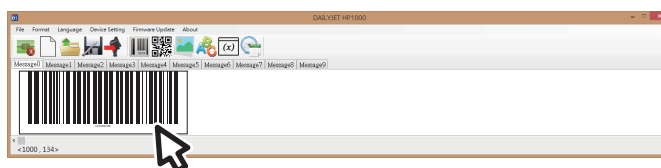
Create a Barcode Message

- 1 Left click on  to create a barcode. The icon will now be highlighted .

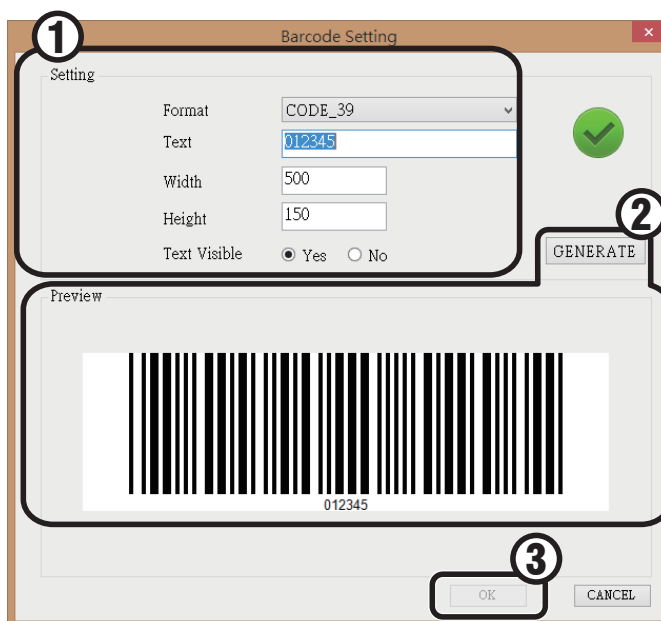
A sample barcode will appear in the editing window.



- 2 Double-click the preset barcode message to enter barcode configuration mode.





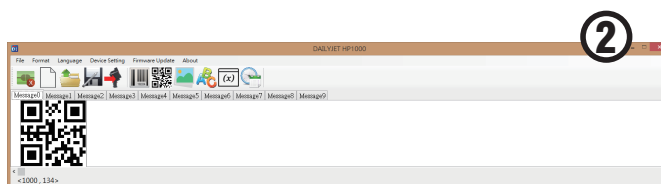
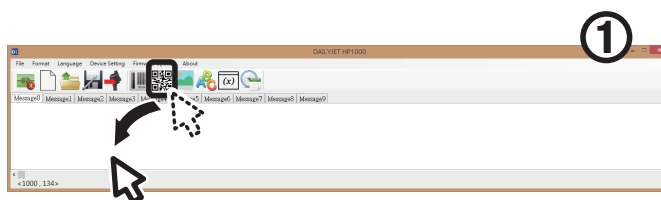
- 3 Configure format, text, height, width, and if the text should be displayed under the barcode. To preview the barcode, click the "generate" button. Click the OK button after completing barcode configuration.



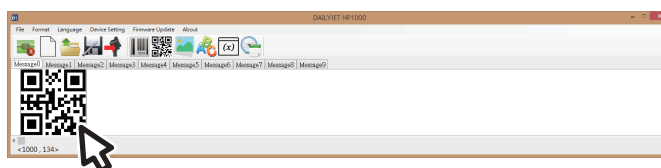
Parameters	Description
Format	The printer currently supports six types of barcode formats. CODEBAR CODE39 CODE93 CODE128 EAN8 EAN13
Text	Enter text here to convert it into a barcode.
Width	Set the width of the barcode in pixels.
Height	Set the height of the barcode in pixels.
Toggle text	Toggles whether barcode text is displayed under the barcode.

Create a Matrix Code

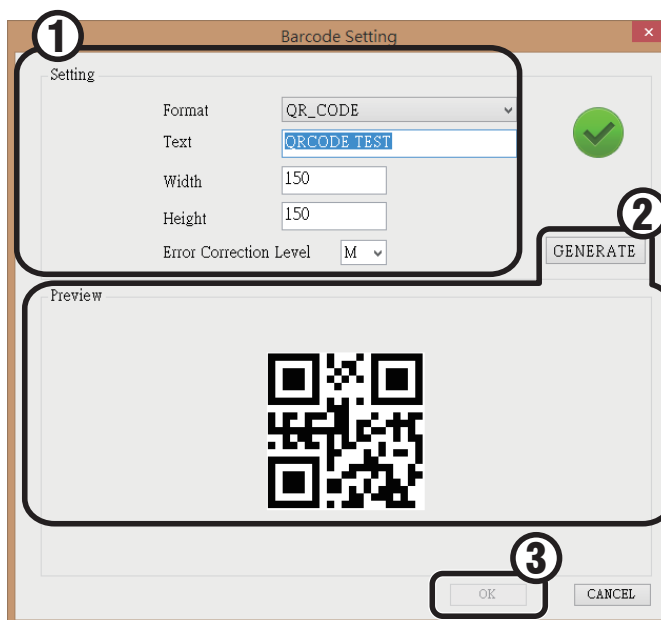
- 1 Left click on  to set up a matrix code. The icon will now be highlighted . Click the editing window, and the preset matrix code will appear.



- 2 Double-click on the preset matrix code to enter matrix code setup.



- 3 Configure format, text, width, height, and quality. Then click generate to preview the matrix code. Click ok to finish setup.




Parameters	Description
Format	The printer currently supports four types of QR code formats. QR CODE DATA MATRIX PDF417 AZTEC
Text	Enter the text here to generate a QR code.
Width	Set the width of the QR code in pixels.
Height	Set the height of the QR code in pixels.
Precision	Set up the level of precision for the QR code. The precision percentage indicates the percentage of error allowed. There are four levels of precision choose from. · L (7%) · M (15%) · Q (25%) · H (30%)

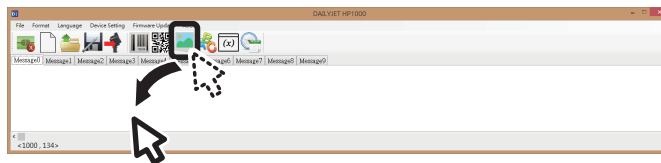
Create an Image Message

1

Left click on  to create an image message.

The icon will now be highlighted blue .

Click the editing window, to select an image to use.



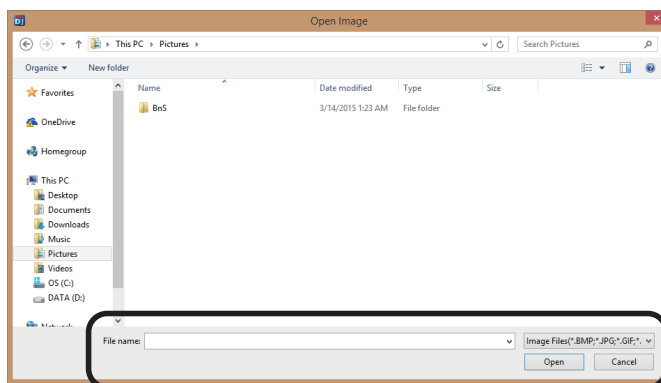
2

Select an image to use.

Note

Make sure your image is in one of the four supported image formats:

- BMP
- JPG
- GIF
- PNG



3

After selecting an image, it will be imported as a message and displayed in the editing window.

Warning

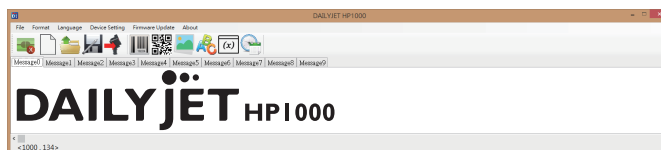
This printer only prints in black and white. If a color image is selected, it will automatically be converted into black and white. It is recommended that you convert the image into black and white before importing to maintain image integrity.

If converting into black in white beforehand is not possible, it is strongly recommended that the image be converted into grayscale prior to importing. This will lead to higher image quality when compared to directly importing a color image.

Importing native black and white images will have the best effect.

The maximum supported image dimensions are 150 dot by 4800 dot.

If the image exceeds the maximum dimensions, the image will be automatically scaled back to fit.



In order to transfer print messages or configure settings it is necessary to connect the printer to a PC.

This section describes how to connect the printer to a PC using the included software.

- 1 Please unplug the AC power adapter before connecting the printer to a computer.
The battery charging indicator must be off before connecting the printer to a computer.
Make sure to turn on the printer before connecting it to a computer. When the printer is turned on the PWR LED will light up.

Warning

Do not plug in the AC power adapter into the printer while it is connected to a computer. This may result in serious damage to the printer.



- 2 Please launch the included software before connecting the printer to a computer.
Please use the supplied USB cable to connect the printer to a computer.

Warning

Make sure to connect the smaller end of the USB cable to the printer and the larger end to the computer.

- 3 Once connected, the computer will automatically detect the printer.
The printer will beep when the connection is

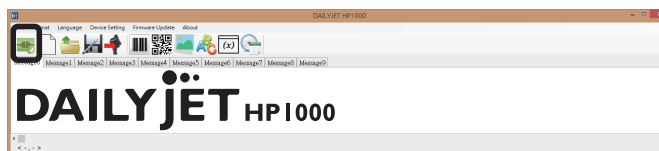
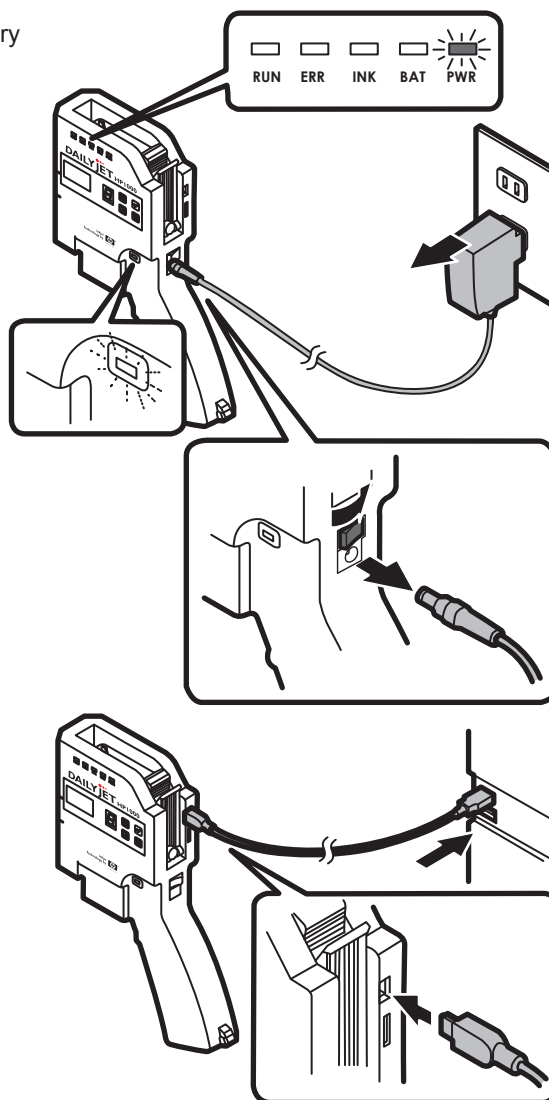
established. On the menu bar, the disconnect

icon  will be replaced by the connect icon .

Warning

If the connection cannot be established, please try the following troubleshooting.



1. While the printer and computer are still connected, re-open the software.
 2. When the printer and the computer are still connected, click the Disconnect Icon.
 3. Reconnect the USB cable.
 4. Check if there are multiple instances of the software running.
 5. Check whether the software supports your computer's operating system.
- If you cannot resolve the problem, please contact the distributor for assistance.



Disconnecting the Printer

Click the connect icon  to disconnect the computer software.

After the printer is disconnected, it will beep. On the menu bar, the connect icon  will be replaced by the


disconnect icon . To reconnect the software, please click the Disconnect Icon  to restore the connection.

Transferring Print Messages to the Printer

The printer will only print messages that have been transferred to it through the provided software. This section describes how to transfer messages to the printer using the provided software.

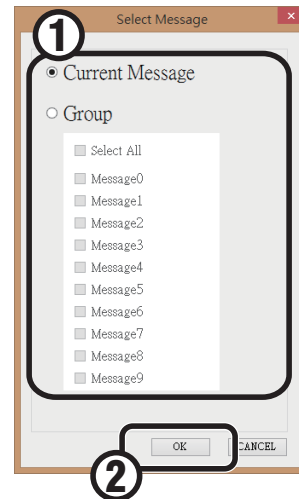
- 1** Make sure the printer is connected to the computer.
(Please see P27 about connecting the printer to a PC)



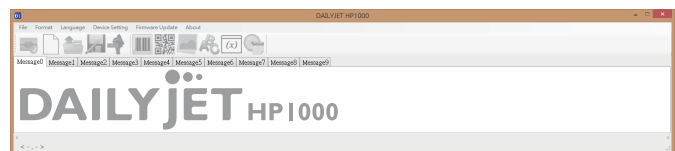
- 2** To select the message that will be transferred, click the Print icon  to enter the selection menu.



- 3** Select the first radio dial to transfer the currently selected message slot.
Select the second radio dial to transfer multiple messages. When transferring multiple messages make sure to select all the messages that will be transferred below. Click OK to begin the transmission process.



- 4** During message transmission, the screen will turn gray. When the transmission is completed, the printer will beep, and the screen will return to normal. When transferring multiple messages, the printer will beep once for every successful transmission. Transmission of multiple messages may take longer than transmission of a single message.



Warning

During transmission, please do not remove the USB cable connecting printer and computer. This may cause corruption of messages and damage to the printer.

- 5** When all transmissions are completed, check the printer to ensure that all messages have been transferred.



8 Printer Settings

Description of All Settings

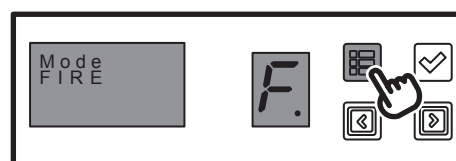
Use settings configure mode to modify these settings.

Settings		Description
FIRE (FIRING MODE) Configures "single" or "continuous" printing.	F.	Display: F (FIRING MODE), Press the confirmation key to modify this setting. Then use the selection keys to switch between single and continuous printing modes ("N" and "C"). Use the confirmation key to save this setting. (Please see P.30 Set up the continuous printing)
PURGE PRINT (PURGE PRINT) Test the printhead.	P.	Display: P (PURGE PRINT), Press the confirmation key to test the printhead. Then print using the suggested motion. The printer should print "0123456789". To exit this mode, press the function key to exit this mode. (Please see P.39 Inkjet head printing test)
ROTARY DIR. (ROTARY DIR .) Set the operating direction, LEFT-to-RIGHT or RIGHT-to-LEFT.	a.	Display: R (ROTARY DIR.), Press the confirmation key to modify this setting. Then use the selection keys to switch between left-to-right and right-to-left operating mode ("L" and "R"). Press the confirmation key to save this setting. L (Left to Right Mode). R (Right to Left Mode). (Please see P.31 Set up the printing direction)
DYNAMIC SN. LAST (DYNAMIC SN . LAST) Serial Number Jump (Backwards).	L.	Display: L (Mode DYNAMIC SN. LAST), Press the confirmation key to enable backwards serial number jumping. Use the selection key to select a number between 0-9. The printer will jump back the specified number of serials and continue printing as normal. Press the confirmation key and this setting will be saved. Continue printing as normal and the printer will jump back the correct number of serials. ***This setting is only for use in conjunction with a serial number print messages. (Please see P.32 Configuring Dynamic Serial Number)
DYNAMIC SN. NEXT (DYNAMIC SN . NEXT) Serial Number Jump (Forwards).	n.	Display: N (Mode DYNAMIC SN. NEXT), Press the confirmation key to enable backwards serial number jumping. Use the selection key to select a number between 0-9. The printer will jump forwards the specified number of serials and continue printing as normal. Press the confirmation key and this setting will be saved. Continue printing as normal and the printer will jump forward the correct number of serials. ***This setting is only for use in conjunction with a serial number print messages. (Please see P.32 Configuring Dynamic Serial Number)
ACTIVE NOZZLE (ACTIVE NOZZLE Mode) Set the printhead to only use a group of nozzles.	H.	Display: H (ACTIVE NOZZLE Mode), Press the confirmation key to modify this setting. Then use the selection keys switch between using all nozzles("B"), just even nozzles("E"), or just odd nozzles("O"). (Please see P.33 Set up the printing nozzle)
DENSITY (DENSITY Mode) Set the printing density.	d.	Display: D (DENSITY Mode), Press the confirmation key to modify this setting. Then use the selection keys to switch between the various density options. If ACTIVE NOZZLE is set to "B" the two options are normal ("1") and darker ("2"). If ACTIVE NOZZLE is set to "E" or "O" the four options are normal ("1") and increasing shades of darkness ("2", "3", "4"). (Please see P.34 Set up the print density)
SPACE (SPACE Mode) Set the distance between messages in continuous print mode.	S.	Display: S (SPACE Mode), Press the confirmation key to modify this setting. Then use the selection keys to switch between head ("SPACE HEAD") and tail ("SPACE TAIL"). Then use the selection keys to pick the distance between messages in continuous mode in (0-9cm). ***This mode is only used in conjunction with CONTINUOUS printing mode. (Please see P.35 Configuring SPACE Mode)

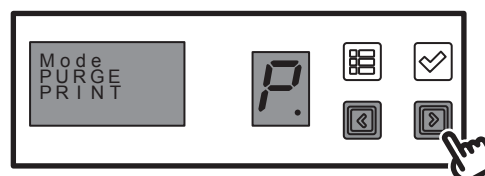
Settings		Description
AUTO SPIT (AUTO SPIT Mode) Activates the auto cleaning function of printhead to prevent the nozzles from clogging.	C.	Display: C (AUTO SPIT Mode), Press the confirmation key to modify this setting. Then use the selection keys to switch between different time lengths (0-90 seconds). When powered on and not printing, the printer can periodically release a very small amount of ink from the printhead for cleaning purposes. This setting configures the time interval between releases. If the interval is set to "0" this setting will be disabled.
RESET (Mode RESET) Reset the initial default setting values.	R.	Display: R (Mode RESET), Press the confirmation key to reset all settings to the factory default. Press the confirmation key a second time to confirm the rest. (Please see P.37 Reset handy printer settings)

Basic Operations about Switching Function Modes

- 1** Please press the function key to enter the function mode.



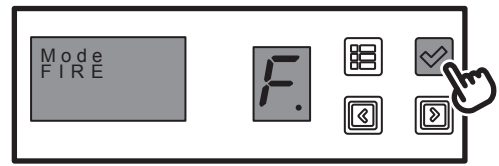
- 2** You can use the select key to select the function mode.



Configuring Continuous Printing

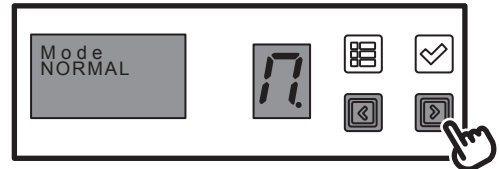
Press the function key to enter settings configuration mode.

- 1 Use the selection keys to select "F" or "FIRE" mode, then press the confirmation key.

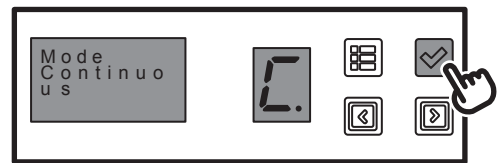


- 2 Use the selection keys to switch between the two firing modes, use the confirmation key to save your selection.

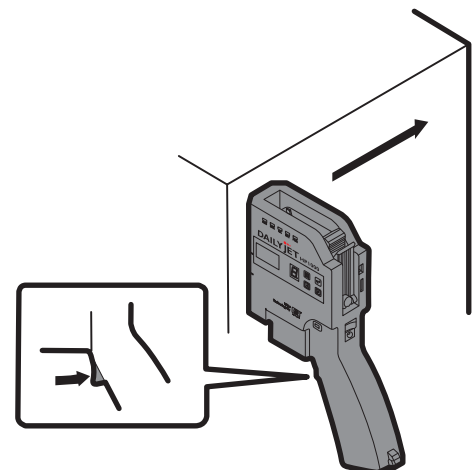
Function Items		Description
NORMAL	<i>n</i>	Single printing
Continuous	<i>c</i>	Continuous printing



- 3 The printer default is normal (single) mode. To switch to continuous, use the selection keys until "C" is selected. Then hit the confirmation key to save the setting. The printer will beep when the print mode is successfully changed.



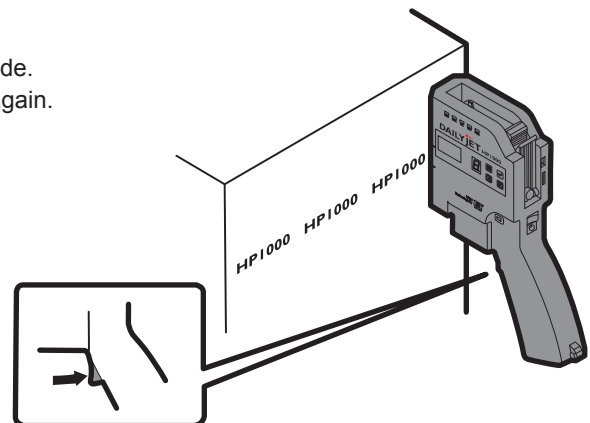
- 4 Now, holding down the active button and scrolling the printer flush against the printing surface will result in continuous prints. The printer will beep whenever an instance of a message is printed.



- 5 Release the printing button to end continuous printing mode. When continuous printing is ended, the printer will beep again.

Note

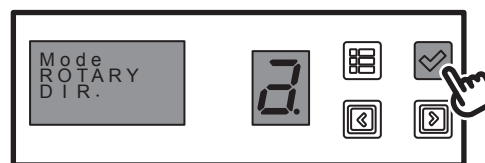
Use space mode to configure the spacing between messages in continuous mode.



Configure Operating Direction

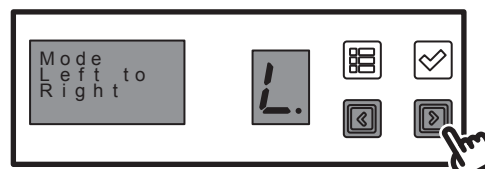
You can change between left-to-right and right-to-left operation.

- 1 Press the function key to enter settings configuration mode. Press the function key and select the "ROTARY DIR . " printing direction mode. Then press the confirm key to enter the setting mode.

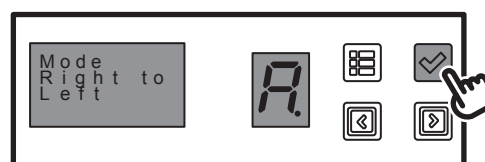


- 2 Use the selection keys to select ROTARY DIR mode ("A"), then press the confirmation key.

Function Items		Description
Left to Right	L.	Configures the printer for left-to-right operating mode.
Right to Left	R.	Configures the printer for right-to-left operating mode.



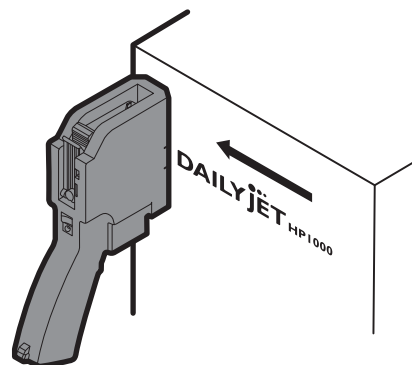
- 3 Use the selection keys to configure the printer in the desired mode. Then press the confirmation key to save the setting. When the printing mode is successfully configured, the printer will beep.



- 4 Once this setting is changed, the printing procedure remains the same except operating direction.

Warning

Switching operating directions does not switch the message direction. It only changes the direction that the printer is scrolled.

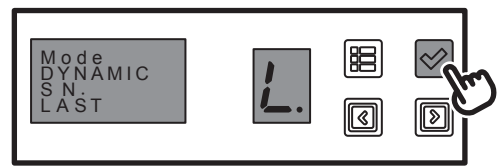


Change the Value of the Serial Number Setting

You can revert the value of the current number to a previous number or advance the number to a later value.

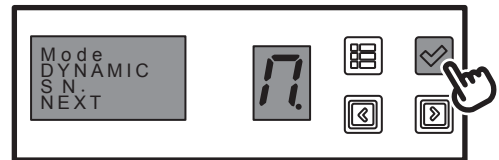
1 Revert the value of the current number to the previous number.

Press the function key and select to the "DYNAMIC SN . LAST" to the serial number of change setting mode (LAST). Press the confirm key to enter the setting mode.



You can advance the value of the current number to the later number.

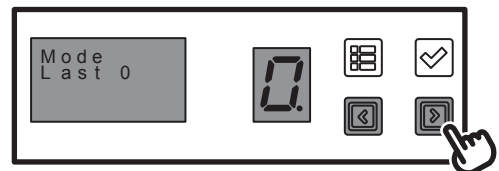
Press the function key and select to the "DYNAMIC SN . NEXT" to the serial number of change setting mode (NEXT). Press the confirm key to enter the setting mode.



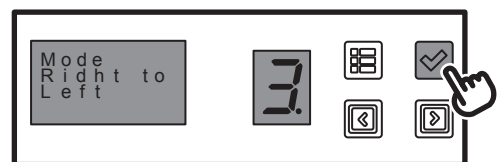
2 Use the select key to select the value of serial number that needs to be changed.

⚠ Warning

The serial number of change setting will depends on the values that were set when setting up a new a serial number. (Please see P.21 Set up a serial number message)



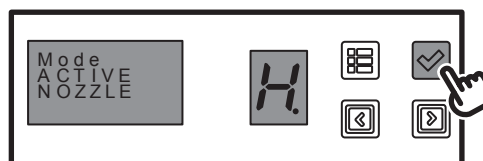
3 Select the new value for the serial number and press the confirm key. When the setup is completed, the handy printer will signal a "Pi ~ PiPiPiPi" sound.



Configure Active Nozzles

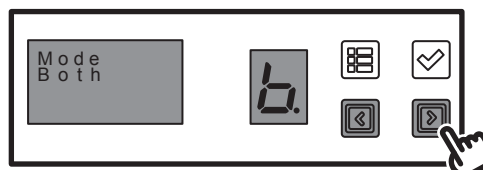
You can configure the nozzles in use based on your printing needs.
Use of different nozzle modes will result in different print results.

- 1 Press the function key to enter settings configuration mode.
Use the selection keys to select "H" or ACTIVE NOZZLE mode, use the confirmation key to save your selection.



- 2 Use the selection keys to switch between the three firing modes, use the confirmation key to save your selection.

Function Items		Description
Both	<i>b.</i>	Configure the printer to use all nozzles
Even	<i>e.</i>	Configure the printer to use only even nozzles
Odd	<i>o.</i>	Configure the printer to use only odd nozzles



Warning

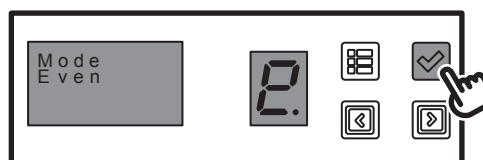
Using "both" will result in darker print results.

If the printing surface is rough, "both" mode may result in undesirable print results. For uneven surfaces, use of "even" or "odd" modes is recommended.

Print density will affect the printing results in these three modes. Please see the next page for more information about print density.

It is recommended not to use "both" mode for fine printing (e.g. detailed images, barcodes, QR codes).

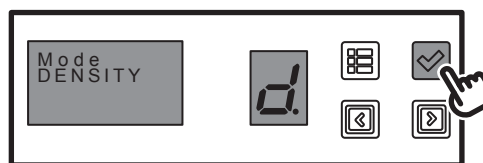
- 3 Once one of the three modes has been selected, press the confirmation key to save all changes. Once the mode is successfully changed, the printer will beep.



Configure Print Density

You can change print density.

- 1** Press the function key to enter settings configuration mode. Use the selection keys to select "d" or DENSITY mode, then press the confirmation key.



- 2** Use the selection keys to switch between the two or four firing modes, use the confirmation key to save your selection.

If **ACTIVE NOZZLE** is set to "BOTH"

Function Items		Description
1	1	Normal density
2	2	High density (darker)

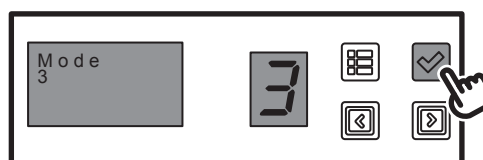
if **ACTIVE NOZZLE** is set to "EVEN" or "ODD"

Function Items		Description
1	1	Normal density
2	2	High density (darker)
3	3	Higher density (even darker)
4	4	Highest density (darkest)

Warning

There are only two settings when **ACTIVE NOZZLE** is in "BOTH" mode (normal and high).
There are four settings when **ACTIVE NOZZLE** is in "EVEN" or "ODD" mode.

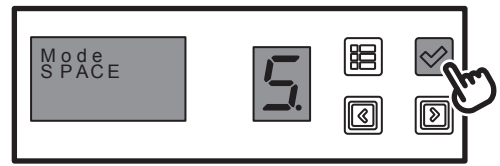
- 3** Press the confirmation key to save all changes. Once everything is successfully changed the printer will beep.



Configure the Spacing Between Messages

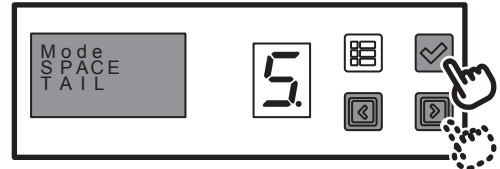
This setting only applies in continuous printing mode.

- 1 Press the function key and select SPACE ("S") to set up the spacing between messages. Press the confirm key to configure the setting.

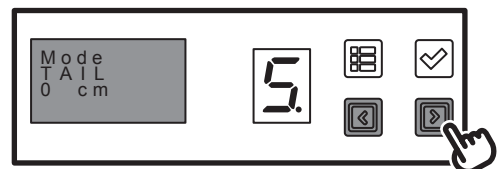


- 2 Use the select key to select between "HEAD" and "TAIL" mode and press the confirm key to configure spacing values.

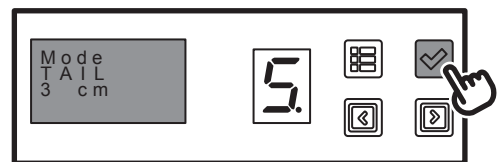
Function Items	Description
SPACE HEAD	Configures the spacing before each print message (includes initial message)
SPACE TAIL	Configures the spacing after each print message



- 3 Select the desired mode. The two modes can be used concurrently. In that case, the spacing between each message is equal to the sum of SPACE HEAD and SPACE TAIL. The space immediately before the first message will be equal to only SPACE HEAD.

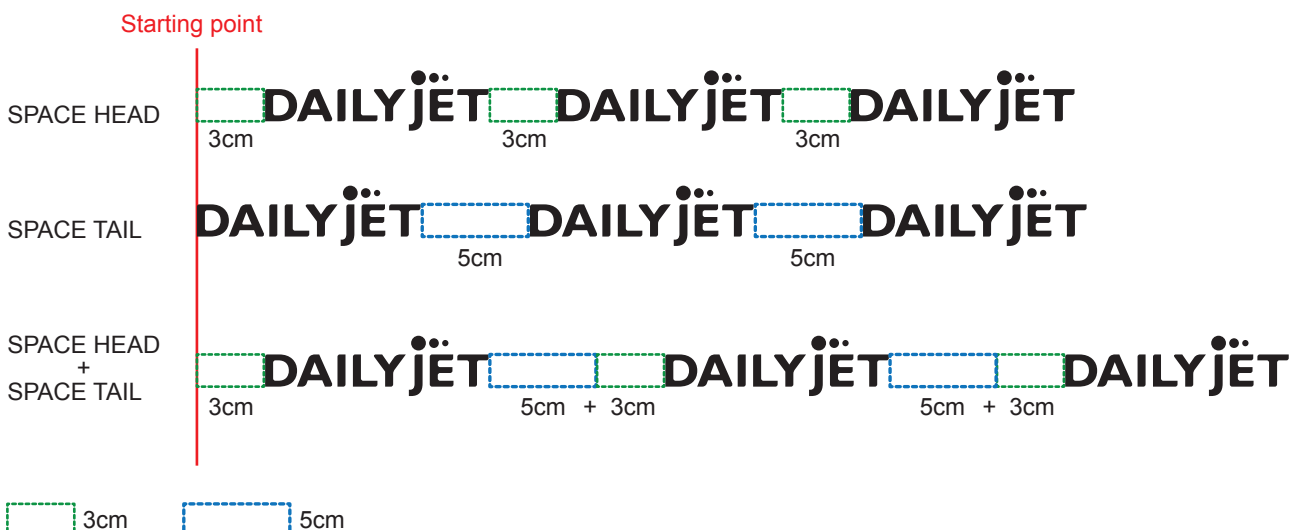


- 3 Select the spacing and press the confirm key. After the setup is completed, the handy printer will signal a "Pi ~ PiPiPiPi" sound.



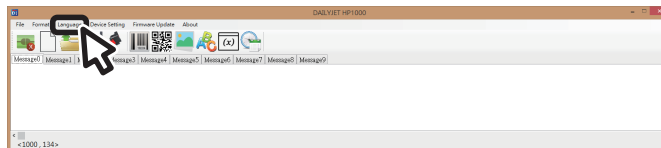
⚠ Note

This image illustrates the relationship between SPACE HEAD and SPACE TAIL as well as demonstrating how they can be used concurrently.



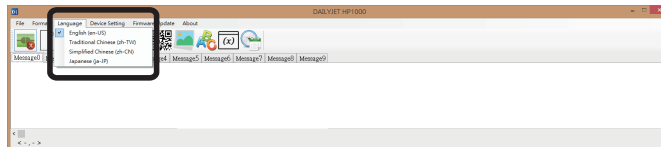
Configure Software Language

1 Click “languages” tab on the menu bar.



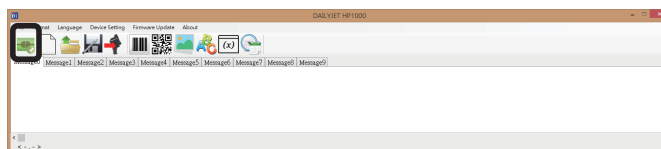
2 Select your desired language from the drop down menu.

- English(en-US)
- Traditional Chinese(zh-TW)
- Simplified Chinese(zh-CN)
- Japanese(jp-JP)



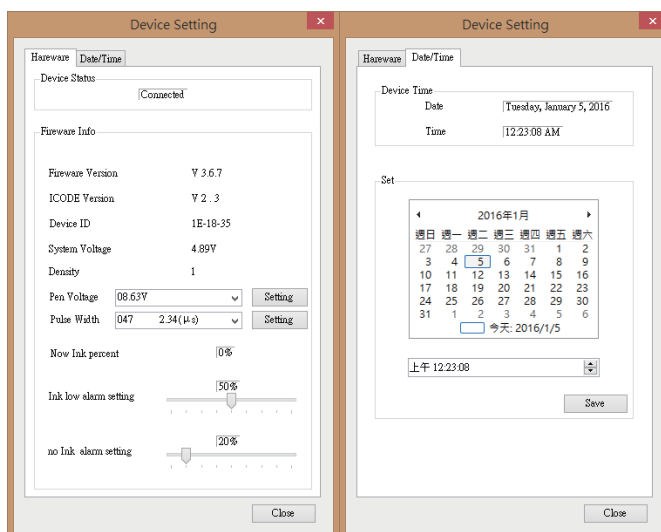
Check Hardware Settings, Configuring Date and Time

1 In order to check firmware settings or configure printer date and time, the printer must be connected to a computer. Firmware settings are different from the software settings described in previous pages.



2 Display the printer's firmware settings.

Options	Description
Firmware Settings	Displays the printer's current firmware settings
Date/Time	Printer's current date and time.



Warning

If the date/time is incorrect, synchronize clocks with a computer using the provided software.
Do not modify the firmware. The ink cartridge's chip is optimized for this firmware. Firmware changes may cause undesirable print results or damage to the ink cartridge.
If the firmware absolutely needs to be changed, please consult the distributor for further information.
Any modification of the firmware will void the warranty. The distributor and manufacturer will not be responsible for any damage to the ink cartridge and printer, nor will they be liable for replacement of the cartridge or printer.
Any modification of the firmware will void the warranty. The agent/distributor or the manufacturer will not be responsible for the damage to the ink cartridge or the replacement of the ink cartridge.
(To reset the printer to factory default settings, please see P.37 Reset printer settings.)

Reset the Printer to Factory Default Settings

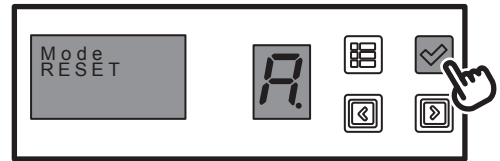
You can reset the printer settings to factory default settings from the manufacturer.

Warning

When resetting the printer to the original factory settings, the print messages will be left intact.

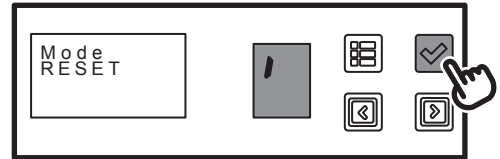
1

Press the function key to enter settings configuration mode. Use the selection key to select "R" or RESET mode. Press the confirmation key to reset settings to the factory default.



2

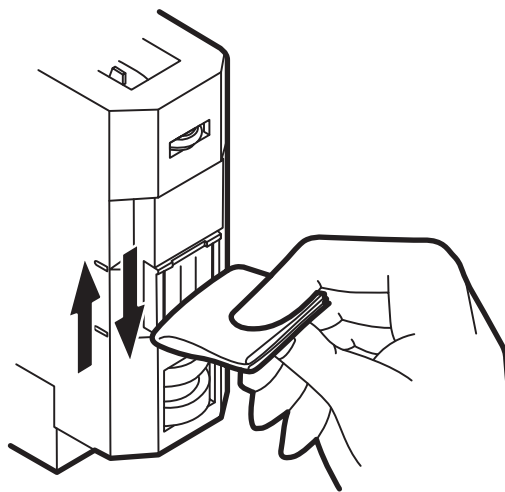
Press the confirmation key again to confirm the reset. When the reset is completed, the printer will beep.



Cleaning the Printhead

Please clean the printhead when the print quality deteriorates, or when the printhead has collected dust or contaminants.

Use a clean tissue to gently and slowly wipe the inkjet head surface from top to bottom or bottom to top. Do not wipe horizontally, horizontal wiping may result in damage to the printhead. After cleaning, please perform the automatic printing tests. If the results are clean and clear, no further cleaning is required. If the results are not clean and clear, please repeat the above cleaning process.



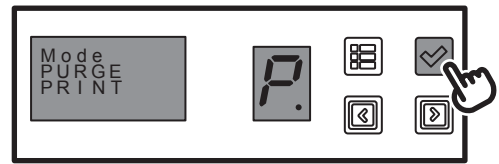
Warning

Please follow one direction (only top to bottom or bottom to top) during the cleaning process. Do not wipe the inkjet head from both directions. Use clean mineral water to slightly moisten the clean tissue, then clean the inkjet head. Do not use any detergent, cleaning products or gasoline to clean the printhead. During the cleaning process, please wipe printhead gently. Using excess force may cause damages to the printhead. The nozzle will be hot after a print job. Please do not touch the nozzle and the surrounding area after a print job.

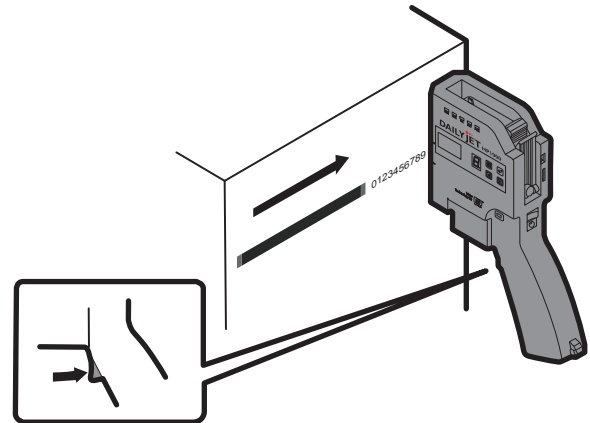
Printhead Printing Test

Use the PURGE PRINT setting to test the printer.

- 1 To perform a print head test using all nozzles, select PURGE PRINT ("P") in settings configuration mode.



- 2 To confirm, press the confirmation key. Then position the printer flush against the print surface and scroll normally to test the printer. At first the printer will release a small amount of ink to clean the printhead before continuing to print the test pattern. When the test is completed the printer will beep.



- 3 Please check the print results.
If the printing test results in horizontal or vertical bending, please repeat the printhead printing test.
(Please see P.38 Basic Operations about clean handy printer and P.39 Inkjet head printing test)
If the test results do not improve, then there may be blockage in the printhead or scratches on the printhead surface.
Please install a new ink cartridge.
(Please see P.8 Install the ink cartridge)



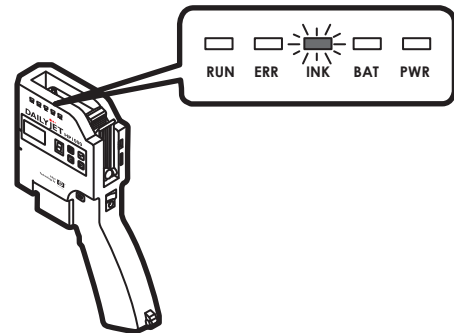
Ink Level

When the ink level is low, the INK LED will light up.

The INK LED lights up when the ink level is 50%. When the ink level is below 50%, print quality will begin to decline.

The INK LED will remain lit until the cartridge is empty. When the cartridge is empty, please replace it with a new one.

You can change the level at which the INK LED lights up through the firmware settings. (Please see P.36 Firmware settings)



Warning

Please discard used ink cartridges in accordance with local disposal or recycling requirements. To purchase additional cartridges, please consult the distributor for the best cartridge to use.

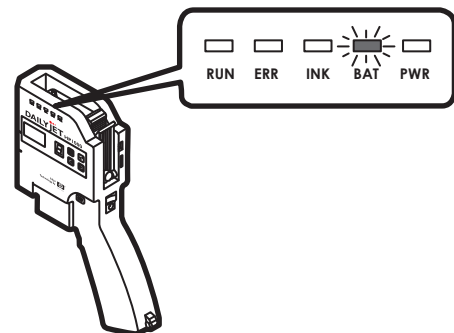
Low Battery

When the battery level is low, the BAT LED will light up.

When the BAT LED is lit, the printer cannot perform any printing operations. The LCD preview will display “battery low” and “Error 2 Icode error.”

To return the printer to normal function, either replace the rechargeable batteries, recharge the batteries using the provided battery charger, or recharge the batteries using the provided AC power adapter.

(Please see P.10 Turning on the printer and P.11 AC power)



Warning

You may use the provided battery charger or the provided AC power adapter to recharge the batteries. (Please see P.6 Parts and Accessories)

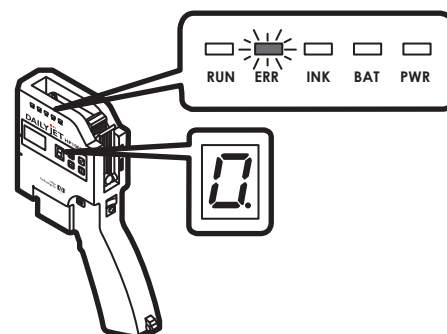
Please discard used batteries in accordance with local disposal or recycling requirements.

If additional rechargeable batteries must be purchased, please follow the specifications listed in the manual.

Error Messages



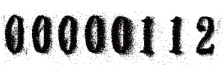

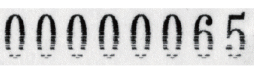
If there is an error, the ERR LED will light up, and the Mode Indicator Panel will display an error code.

Please use the error message descriptions on this page to resolve any issues.



Error codes			Description
Error 0	0.	Cannot detect Micro SD card	Check if a micro SD card is present in the SD card slot, or if one has been installed incorrectly. Correctly insert a micro SD card. (Please see P.9 Micro SD card check)
Error 1	1.	Other Micro SD Card error	Check if the printer can read the micro SD card. Please reinstall the Micro SD card. (Please see P.9 Micro SD Card check)
Error 2	2.	Icode Verification Failure	Check if an ink cartridge is present or if one has been properly installed. Please install an ink cartridge or reinstall the ink cartridge. (Please see P.8 Ink Cartridge Installation) Check if the ink cartridge is a genuine HP cartridge. Please use a genuine HP cartridge. (Please see P.6 Parts and Accessories) Check if the battery is low. Please charge the rechargeable batteries using either the provided battery charger or the provided AC power adapter. (Please see P.10 Turning on the Printer, P.11 AC power and P.40 Low Battery)
Error 3	3.	FRAM error	Check if the battery is low. Please charge the rechargeable batteries using either the provided battery charger or the provided AC power adapter. (Please see P.10 Turning on the Printer, P.11 AC power and P.40 Low Battery) If the error message cannot be resolved when the batteries are fully charged, please consult the distributor.
Error 4	4.	Connection error	Check if you are using the USB cable provided with the printer. Please use the USB cable from the original package. (Please see P.6 Parts and Accessories)
Error 5	5.	RTC error	This may be caused by a low internal battery level. Please contact the distributor to resolve the error.
Error 6	6.	Other hardware error	This may be the result of internal hardware damage. Please contact the distributor to resolve this error.

Resolving Poor Print Quality

Print Result		Description
	Print is horizontally stretched Vertical misalignment or banding Print message printed several times	<p>Check if the main roller is not contacting the print surface. The main roller must be flush with the print surface. If it is not flush with the surface, this printing condition may occur.</p> <p>This printing condition may be caused by an uneven print surface. Special printing equipment will be required to resolve this issue. (Please see P.16 Basic Operations)</p> <p>This printing condition may result from the main roller moving too fast during a print.</p> <p>This printing condition can occur if the printing speed is too fast. When the printing speed exceeds the guidances, the printer will automatically stop printing.</p> <p>Please maintain an appropriate printing speed to achieve good print results. (Please see P.16 Basic Operations)</p>
	Print messaged is slanted to one side Print message printed several times	<p>Check whether the printer is tilted during printing. The printer needs to be held parallel to the print surface. (Please see P.16 Basic Operations)</p>
	Blurry or smeared prints Poor Printing quality	<p>Check whether the auxiliary roller is in contact with the print surface during printing.</p> <p>The auxiliary roller needs to be on the printing surface. Otherwise, it may cause this print result. (Please see P.16 Basic Operations)</p>
	Incorrect print density Interrupted print job	<p>Check if the ink or battery level is low.</p> <p>If required, please replace the ink cartridge, replace the rechargeable batteries, or recharge the batteries. (Please see P.8 Ink cartridge installation)</p> <p>(Please see P.10 Turning on the Printer, P.11 AC power and P.40 Low Battery)</p> <p>This printing condition can occur if the printing speed is too fast. When the printing speed exceeds the guidances, the printer will automatically stop printing.</p> <p>Please maintain an appropriate printing speed to achieve good print results. (Please see P.16 Basic Operations)</p>
	Horizontal misalignment or banding	<p>The printout has horizontal misalignment or banding. Please conduct a printhead printing test.</p> <p>If the test results in the same printing issues, please clean the printhead a few times.</p> <p>Perform the printhead printing test again. (Please see P.38 Basic Cleaning Guide and P.39 Printhead printing test)</p> <p>If cleaning doesn't resolve the print condition, the printhead surface may be scratched, or have a blockage.</p> <p>Please replace the ink cartridge. (Please see P.8 Ink cartridge Installation)</p>

Troubleshooting

If the printer does not function properly, refer to this page for troubleshooting. If the problem cannot be resolved, please contact the distributor for further information.

Issue	Potential Solution
Printer will not turn on	<p>Check if the battery level is low or if batteries were properly installed. Please check if the battery level is low. Please check if the batteries were installed properly. (Please see P.10 Turning on the Printer and P.40 Low Battery) Check if the power socket and AC power supply are working. Please switch power plugs to check if to see AC power adapter is working. (Please see P.11 AC Power) If still you cannot turn on the power, there may be hardware damage. Please contact the distributor for further information.</p>
AC power adapter is not working	<p>Please check whether the batteries are installed correctly. (Please see P.10 Turning on the printer) Please check whether the battery charging indicator is lit up. If the battery charging indicator is not on, there may be hardware damage. Please contact the distributor for further information.</p>
Printer cannot print	<p>Check if the BAT LED is lit up. (Please see P.10 Turning on the printer and P.40 Low Battery) If the ink cartridge is a genuine HP cartridge or if the ink level is too low. The printer will read the cartridges lcode to identify if the cartridge is a genuine HP cartridge. (Please see P.8 Installing the ink cartridge) Please check if the printhead cap is still on. Printing cannot occur when the printhead cap is on. Please remove the printhead cap in order to print. (Please see P.16 Basic Operations) Please check if the LCD preview and mode indicator panel are both off. Please press any key to exit from standby mode. If the problem cannot be resolved, there may be hardware damage. Please contact the distributor for further information.</p>
The printer cannot connect to the software	<p>Please use the following methods to troubleshoot. 1. When the printer is connected to the computer, please close and re-open the software. 2. When the printer is connected to the computer, please click the Disconnect Icon. 3. Reconnect the USB cable at both ends. 4. Check if multiple instances of the software are open. 5. Check whether your operating system is supported. Check if the USB cable in use is the one provided with the printer. Other USB cables may cause bad connections. Check whether the USB cable is plugged in correctly. Both ends of the USB cable need to be plugged in completely. If the problem cannot be resolved, there may be hardware damage. Please contact the distributor for further information.</p>

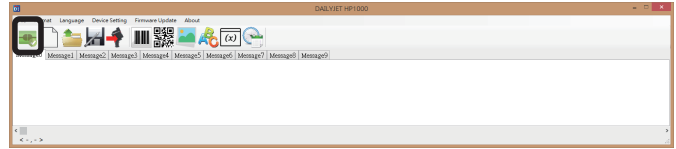
Firmware Updates

Please use the provided software to update your printer's firmware.

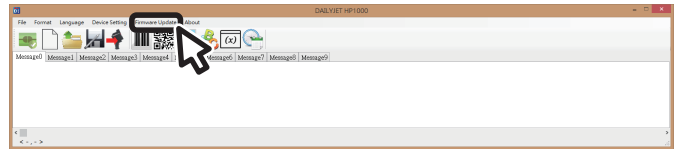
Warning

The distributor will provide the firmware update archives.

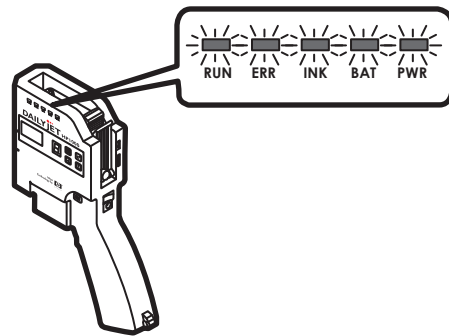
- 1** Your printer needs to be connected to computer software.
(Please see P.27 Connecting the printer to a PC)



- 2** Please click the "Firmware Update" button in the menu bar.



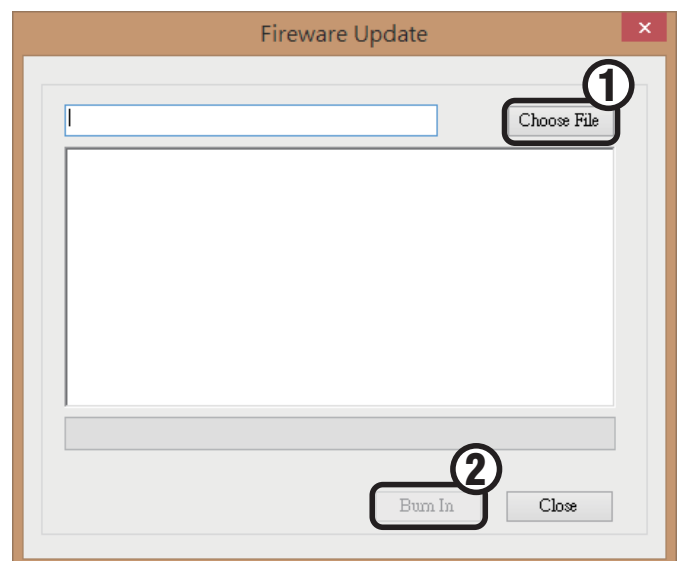
- 3** When "Firmware Update" is clicked, all the status indicators on the handy printer will light up.



- 4** Click the "Choose File" button to select the firmware file that you want to update to. Select the firmware file and click the "Burn In" to perform the firmware update.

Warning

During the firmware update process, please do not disconnect the printer or close the computer software. The disconnection may cause the update to fail, and may result in printer damage.



- 5** When the firmware is updated, the printer will automatically reboot and close the firmware update page. The handy printer will the reconnect with the computer software.

Warning

If the printer cannot reconnect with the computer software, please disconnect and reconnect the USB cable, and the USB cable. The printer will automatically reconnect to the software.

Technical Information

Item	Description
Printing technology	HP Thermal Inkjet
Printing speed	Maximum 30m / min
The nozzle array	300 points (150 points x 2 columns)
Inkjet printing direction	Transverse printing/from top to bottom
Printing height	Maximum 12.7mm
Number of inkjet head	One inkjet head Compatible with genuine HP ink cartridges
Number of print messages	Ten messages
Size of a print message	Maximum 150 x 4800 dot
Supported fonts	Fonts within the user's computer
Time Stamp	Year (AD)/Month/Day/Hour/Minute/Second
Serial number messages	Up to 8 numbers/Cycle/Initial value/End value/Set shift
Applicable barcode specifications	CODEBAR/CODE39/CODE128/EAN8/EAN13
Applicable matrix barcode specifications	QR CODE/DATA MATRIX/PDF417/AZYEC
Applicable image specifications	BMP/JPG/GIF/PNG
Supported Operating System	Windows 8 (32bit/64bit) / Windows 7 (32bit/64bit) / Windows Vista (32bit/64bit)
Standby time	About 20 hours (It varies depending on the usage.)
Continuous operation time	About 8 hours (It varies depending on the usage.)
Operating environment	5 to 45 degrees Celsius and 10% - 80% relative humidity
Producer	TAIWAN
Manufacture year and serial number	Please see the label of the printer
Warnings	Only use specified power requirements for the printer Please use in a well ventilated environment. Use caution to avoid damage.

DAILYJET^{HP} HP I 000

Best Professional Handy Printers



To purchase ink cartridges or for maintenance , please contact the distributor.